

# Artecy

## CROSS STITCH

### Mini Rainbow Dragon 3



\* Original image© T Clarke using Midjourney AI  
Cross Stitch Design by Tereena Clarke.

Completed Size = 133w x 200h Stitches

14 Count, 9.5w x 14.5h inches (24cm x 37cm)

16 Count, 8.5w x 12.5h inches (22cm x 32cm)

18 Count, 7.5w x 11.5h inches (19cm x 29cm)

Uses 87 DMC cotton colours. Only full cross stitches are used in this pattern.

---

Copyright of Artecy Cross Stitch

[www.artecy.com](http://www.artecy.com)

[www.artecyshop.com](http://www.artecyshop.com)

[www.facebook.com/groups/artecy](https://www.facebook.com/groups/artecy)

# *Pattern Instructions*

\* This pattern can be worked on any fabric type, colour or count you prefer. To work out the size of the finished article, take the number of stitches wide and high and divide it by the count of your fabric (e.g. 14,16,18 count aida etc) to get the size in inches. Times it by 2.54 to get centimetres. We have the sizes in inches shown on the previous page. Also leave at least a few inches of fabric around each side of the design to assist in framing. The higher the fabric count the smaller the completed project will be.

\* To put the pattern together look in the top and bottom corners. The page numbers in brackets show which page number it joins up to. Page 1 always starts at the top left hand side of the pattern. Our pages also have a shaded grey section. This indicates a 3 row overlap from adjoining pages to assist with reading the pattern. PLEASE DO NOT RESTITCH THIS AREA.

\* You should begin at the centre of the pattern. To find the centre of the pattern it is just a matter of laying the pattern out and locating the arrows at the top and left hand side of the patterns, they are determined by dividing the stitch numbers wide and high in half. Where the two points meet in the middle, that is the centre.

\* If you need more assistance to find the middle of your pattern or the page layout, please see the notes section on the colour symbol chart. The easiest way to stitch this pattern, as it has multiple pages, is to stitch one page at a time.

\* We suggest using two strands of floss for each stitch and one strand for backstitching if the pattern calls for it.

We hope you enjoy stitching our pattern.

Thanks and Best Wishes  
Tereena Clarke

Artecy Cross Stitch  
Po Box 3474  
Tuggerah, NSW 2259  
Australia

Websites: [www.artecy.com](http://www.artecy.com) and [www.artecyshop.com](http://www.artecyshop.com)  
Email: [artecy@artecy.com](mailto:artecy@artecy.com) or [stitch@artecyshop.com](mailto:stitch@artecyshop.com)

\*Patterns are strictly for personal use only. It is against our copyright to make kits for sale from our designs or to sell, copy or redistribute this pattern in any form. You may not upload our patterns to any internet forums or groups or any other website. You may make 1 copy of this pattern for a working copy for your own personal use if needed.

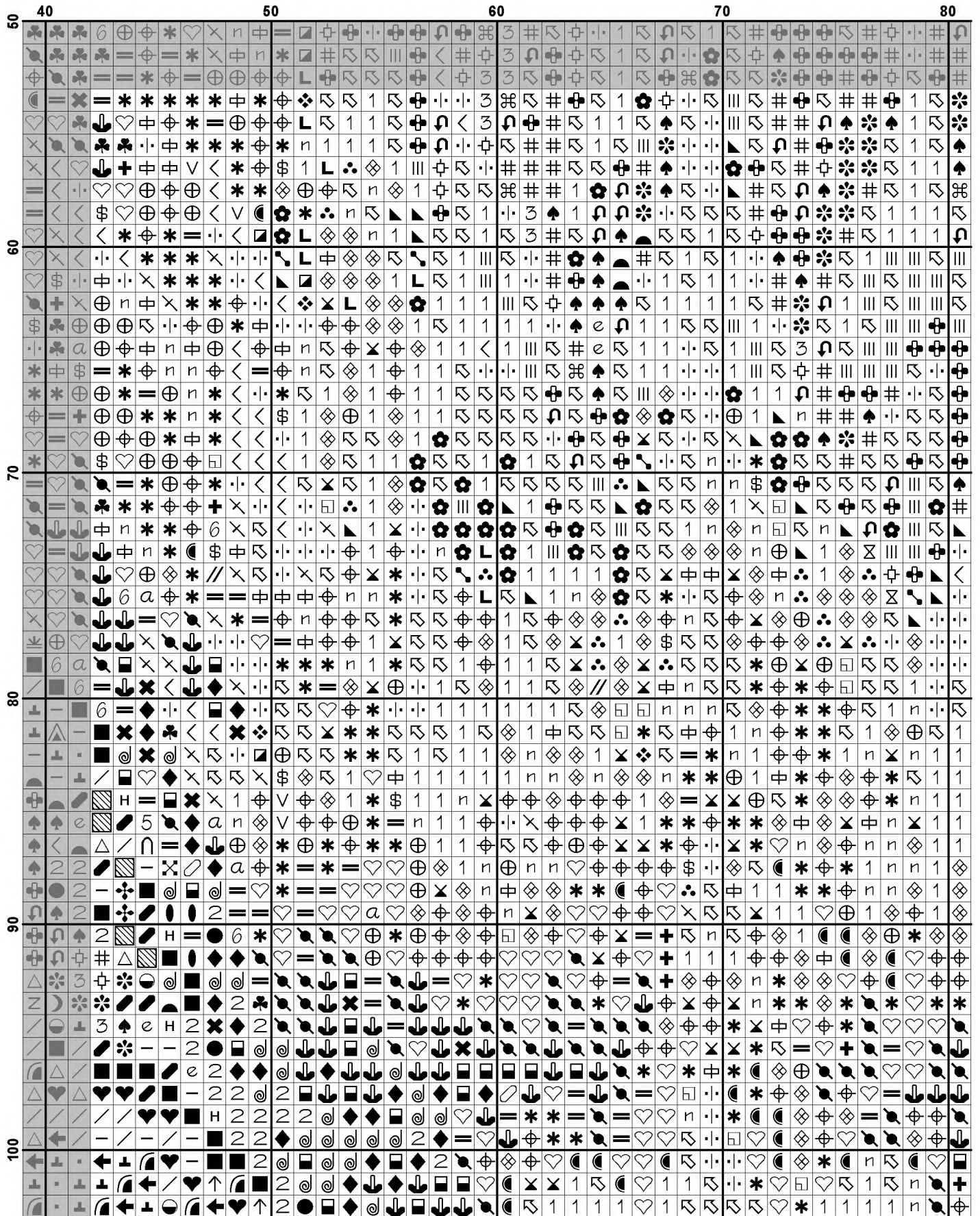


	40	50	60	70	80
10	6	7	6	6	6
20	6	7	7	6	6
30	6	7	7	7	6
40	6	7	7	7	6
50	6	7	7	7	6
60	6	7	7	7	6
70	6	7	7	7	6
80	6	7	7	7	6
90	6	7	7	7	6
100	6	7	7	7	6
110	6	7	7	7	6
120	6	7	7	7	6
130	6	7	7	7	6
140	6	7	7	7	6
150	6	7	7	7	6
160	6	7	7	7	6
170	6	7	7	7	6
180	6	7	7	7	6
190	6	7	7	7	6
200	6	7	7	7	6
210	6	7	7	7	6
220	6	7	7	7	6
230	6	7	7	7	6
240	6	7	7	7	6
250	6	7	7	7	6
260	6	7	7	7	6
270	6	7	7	7	6
280	6	7	7	7	6
290	6	7	7	7	6
300	6	7	7	7	6
310	6	7	7	7	6
320	6	7	7	7	6
330	6	7	7	7	6
340	6	7	7	7	6
350	6	7	7	7	6
360	6	7	7	7	6
370	6	7	7	7	6
380	6	7	7	7	6
390	6	7	7	7	6
400	6	7	7	7	6
410	6	7	7	7	6
420	6	7	7	7	6
430	6	7	7	7	6
440	6	7	7	7	6
450	6	7	7	7	6
460	6	7	7	7	6
470	6	7	7	7	6
480	6	7	7	7	6
490	6	7	7	7	6
500	6	7	7	7	6
510	6	7	7	7	6
520	6	7	7	7	6
530	6	7	7	7	6
540	6	7	7	7	6
550	6	7	7	7	6
560	6	7	7	7	6
570	6	7	7	7	6
580	6	7	7	7	6
590	6	7	7	7	6
600	6	7	7	7	6
610	6	7	7	7	6
620	6	7	7	7	6
630	6	7	7	7	6
640	6	7	7	7	6
650	6	7	7	7	6
660	6	7	7	7	6
670	6	7	7	7	6
680	6	7	7	7	6
690	6	7	7	7	6
700	6	7	7	7	6
710	6	7	7	7	6
720	6	7	7	7	6
730	6	7	7	7	6
740	6	7	7	7	6
750	6	7	7	7	6
760	6	7	7	7	6
770	6	7	7	7	6
780	6	7	7	7	6
790	6	7	7	7	6
800	6	7	7	7	6
810	6	7	7	7	6
820	6	7	7	7	6
830	6	7	7	7	6
840	6	7	7	7	6
850	6	7	7	7	6
860	6	7	7	7	6
870	6	7	7	7	6
880	6	7	7	7	6
890	6	7	7	7	6
900	6	7	7	7	6
910	6	7	7	7	6
920	6	7	7	7	6
930	6	7	7	7	6
940	6	7	7	7	6
950	6	7	7	7	6
960	6	7	7	7	6
970	6	7	7	7	6
980	6	7	7	7	6
990	6	7	7	7	6
1000	6	7	7	7	6

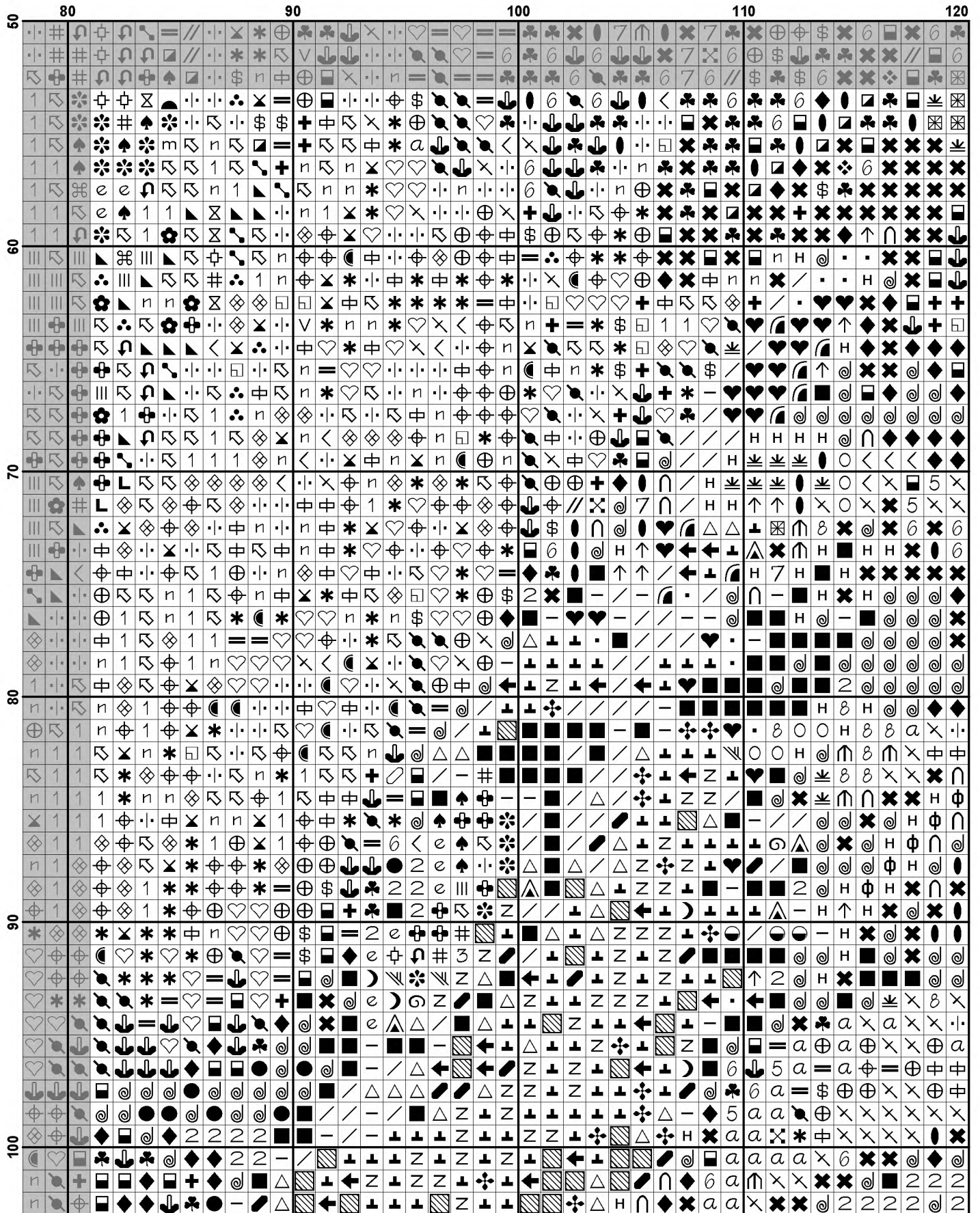


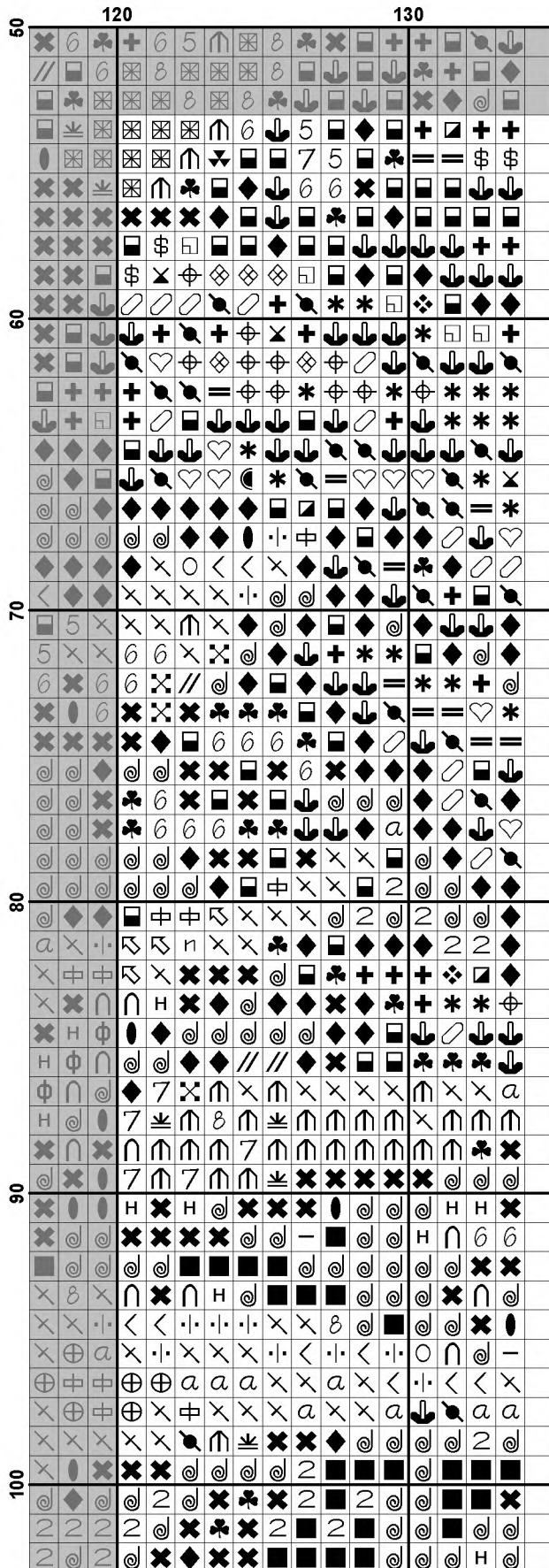


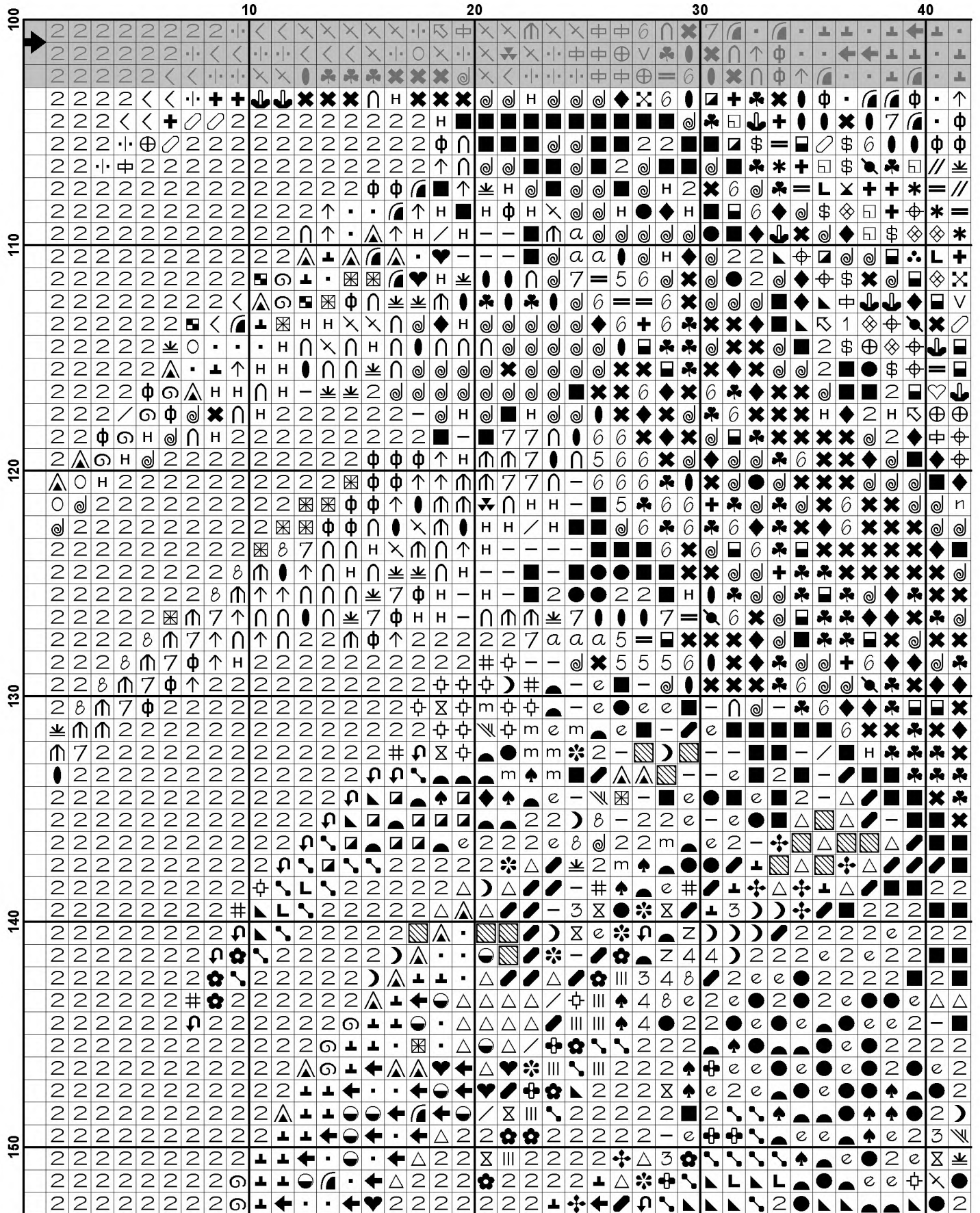


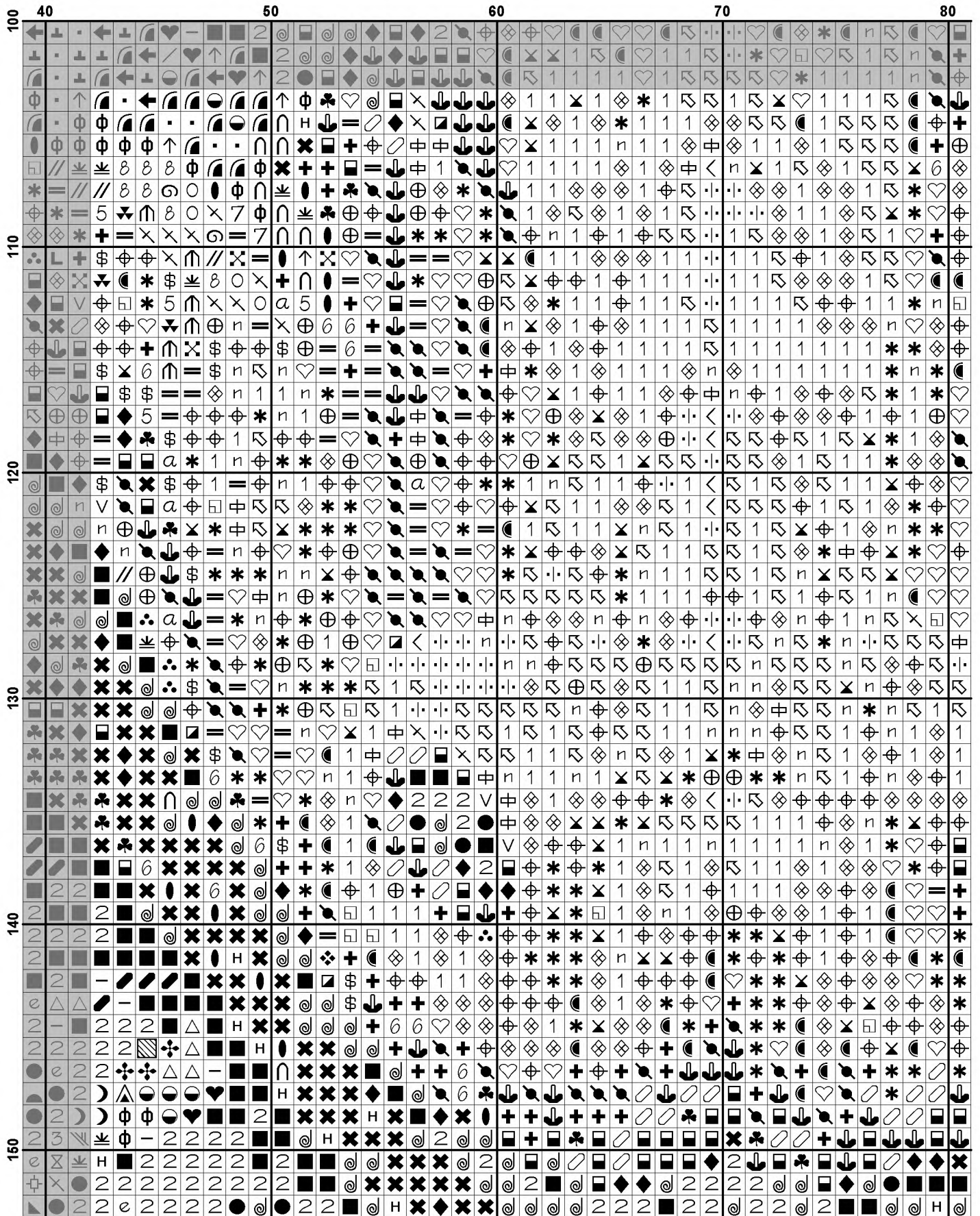


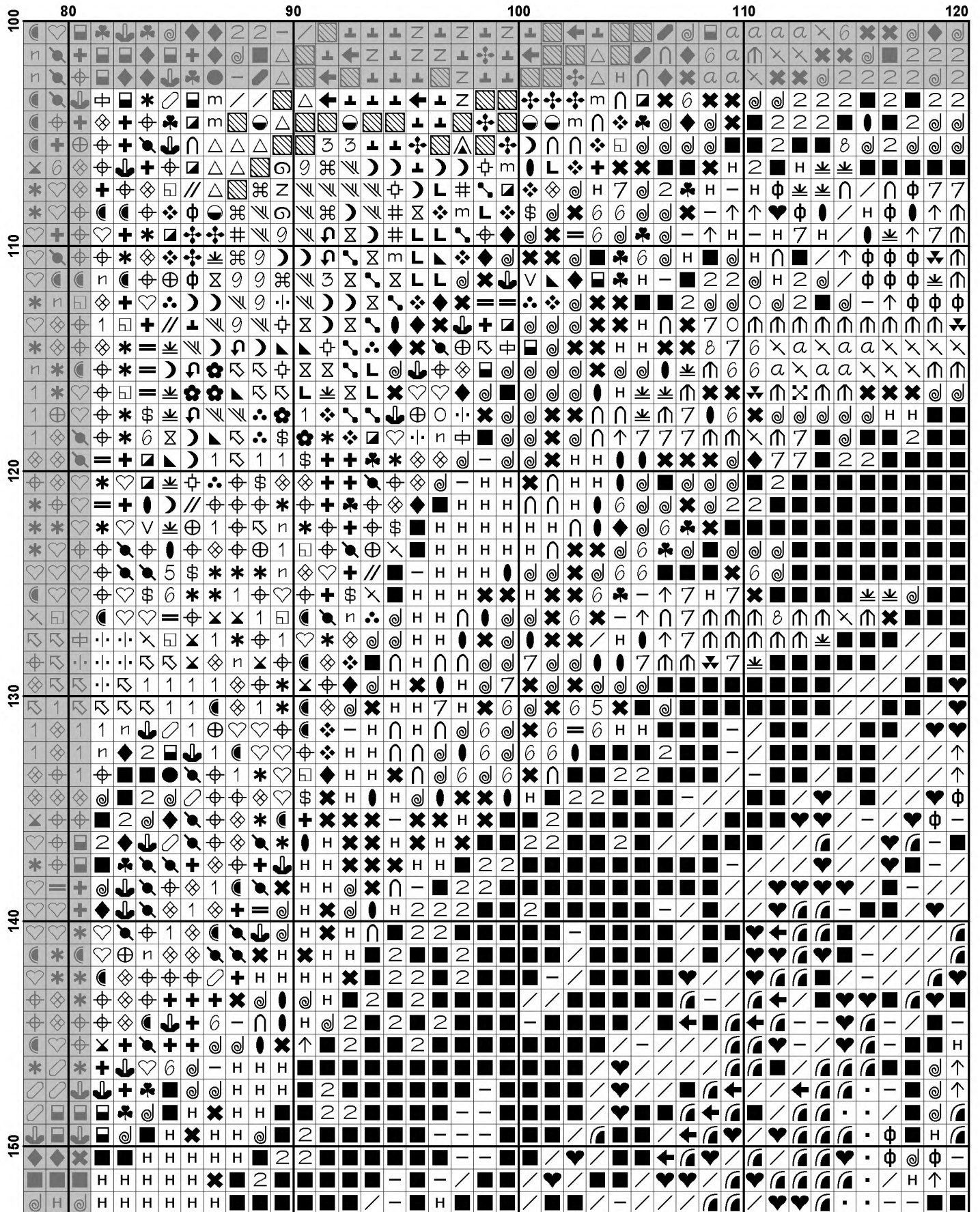


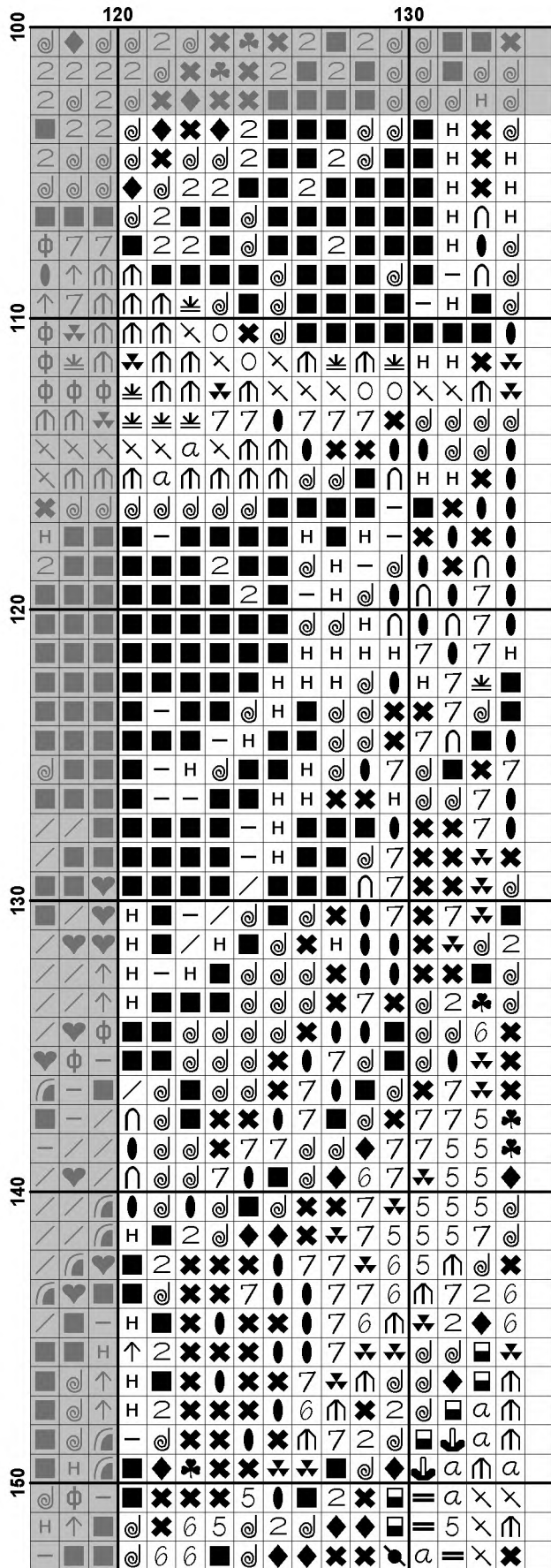


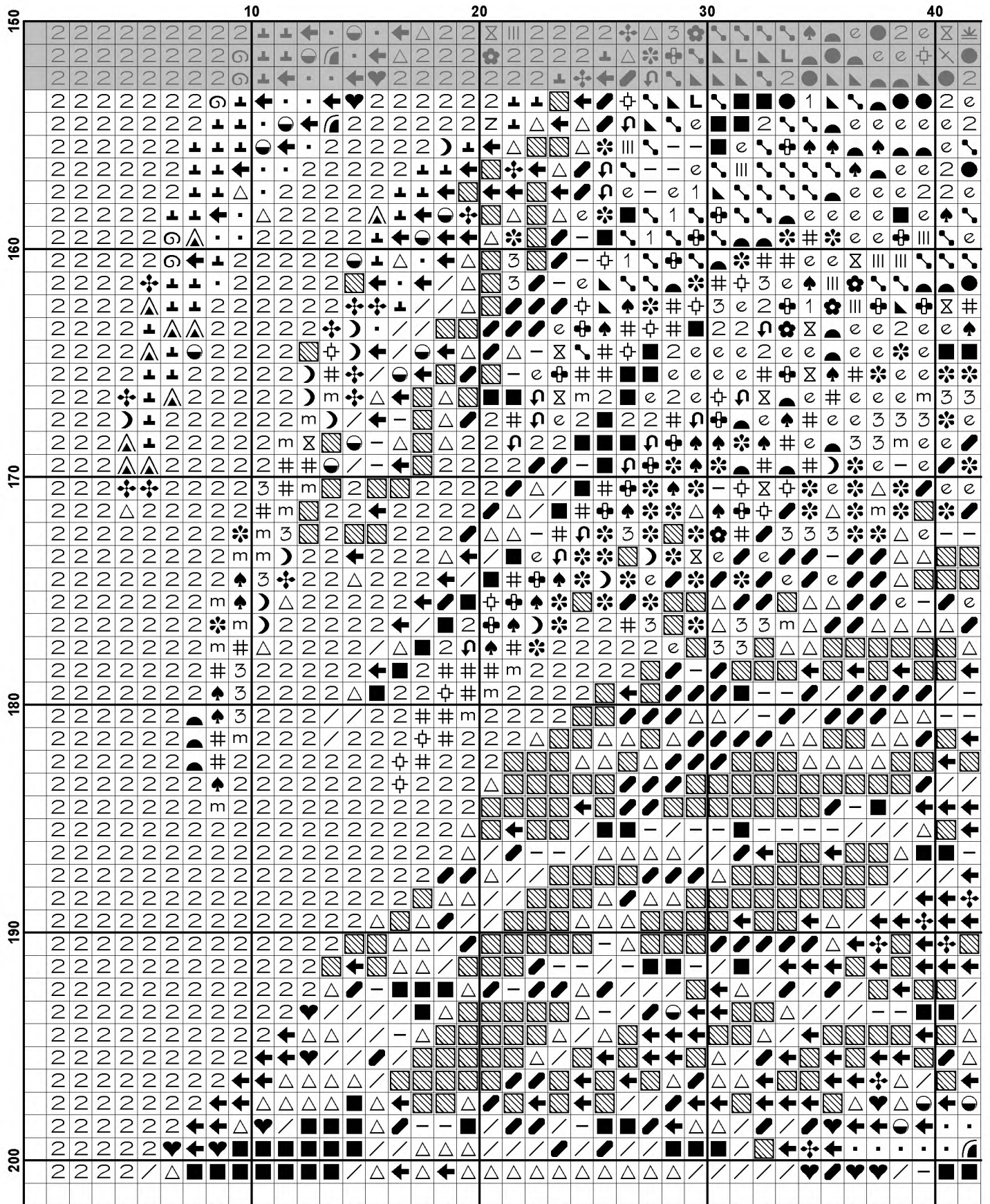






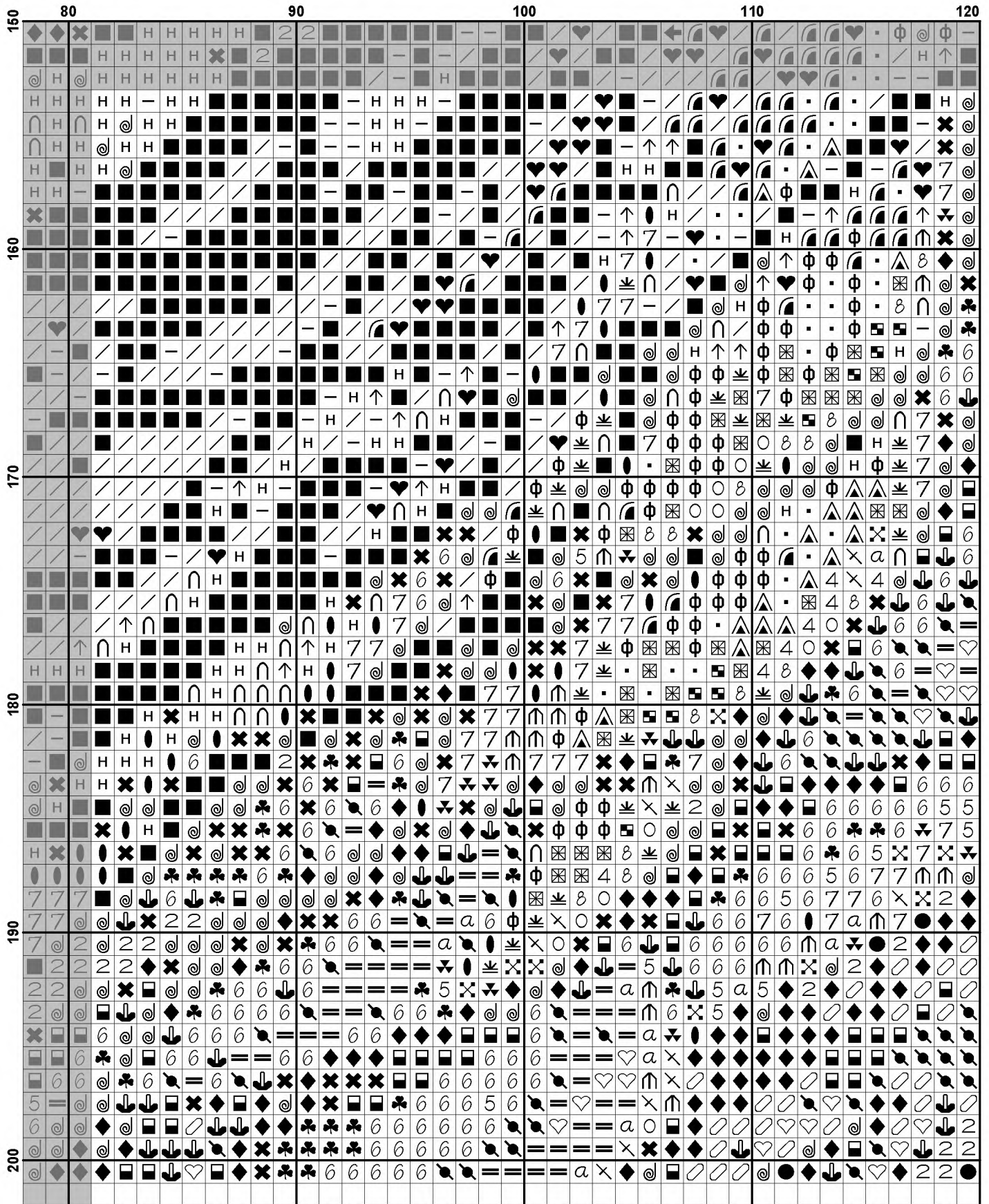


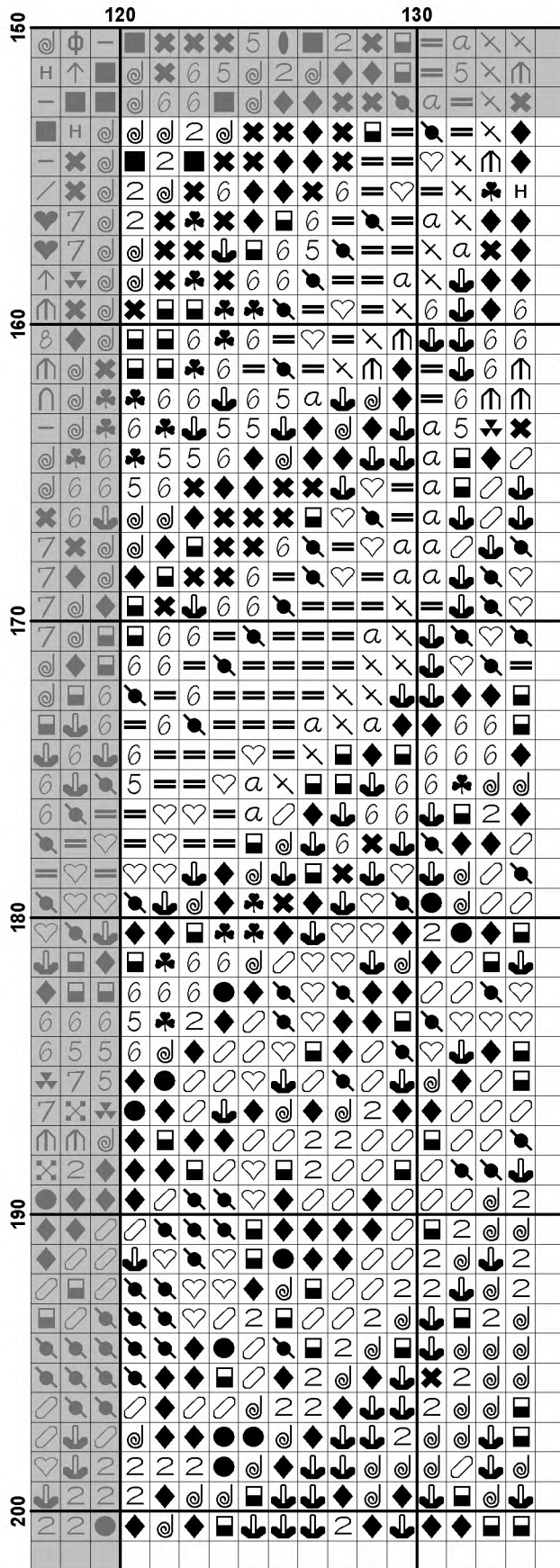













**Pattern Name:** Mini Rainbow Dragon 3  
**Designed By:** Artwork by Tereena Clarke  
**Company:** Artecy Cross Stitch  
**Copyright:** Copyright Artecy Cross Stitch. All rights Reserved.  
**Fabric:** Aida 14, White  
 133w X 200h Stitches  
**Size(s):** 14 Count, 9-1/2w X 14-1/4h in  
 16 Count, 8-1/4w X 12-1/2h in  
 18 Count, 7-3/8w X 11h in

**Floss Used for Full Stitches:**

Symbol	Strands	Type	Number	Color
	2	DMC	154	Grape-VY DK
	2	DMC	155	Blue Violet-MD DK
	2	DMC	158	Cornflower Blue-MD VY DK
	2	DMC	166	Moss Green-MD LT
	2	DMC	209	Lavender-DK
	2	DMC	310	Black
	2	DMC	318	Steel Gray-LT
	2	DMC	321	Christmas Red
	2	DMC	326	Rose-VY DK
	2	DMC	340	Blue Violet-MD
	2	DMC	350	Coral-MD
	2	DMC	351	Coral
	2	DMC	413	Pewter Gray-DK
	2	DMC	471	Avocado Green-VY LT
	2	DMC	498	Christmas Red-DK
	2	DMC	517	Wedgewood-DK
	2	DMC	550	Violet-VY DK
	2	DMC	554	Violet-LT
	2	DMC	600	Cranberry-VY DK
	2	DMC	601	Cranberry-DK
	2	DMC	606	Bright Orange-Red
	2	DMC	666	Christmas Red-BRT
	2	DMC	700	Christmas Green-BRT
	2	DMC	702	Kelly Green
	2	DMC	703	Chartreuse
	2	DMC	704	Chartreuse-BRT
	2	DMC	718	Plum
	2	DMC	720	Orange Spice-DK
	2	DMC	722	Orange Spice-LT
	2	DMC	740	Tangerine
	2	DMC	741	Tangerine-MD
	2	DMC	742	Tangerine-LT
	2	DMC	743	Yellow-MD
	2	DMC	745	Yellow-LT Pale
	2	DMC	760	Salmon
	2	DMC	792	Cornflower Blue-DK
	2	DMC	796	Royal Blue-DK
	2	DMC	797	Royal Blue
	2	DMC	798	Delft Blue-DK
	2	DMC	803	Baby Blue-UL VY DK
	2	DMC	814	Garnet-DK
	2	DMC	817	Coral Red-VY DK
	2	DMC	820	Royal Blue-VY DK
	2	DMC	823	Navy Blue-DK
	2	DMC	825	Blue-DK

Symbol	Strands	Type	Number	Color
	△	2	DMC 826	Blue-MD
	⋈	2	DMC 832	Golden Olive
	e	2	DMC 890	Pistachio Green-UL DK
	a	2	DMC 892	Carnation-MD
	+	2	DMC 900	Burnt Orange-DK
	♣	2	DMC 905	Parrot Green-DK
	⊕	2	DMC 907	Parrot Green-LT
	3	2	DMC 911	Emerald Green-MD
	✕	2	DMC 915	Plum-DK
	●	2	DMC 917	Plum-MD
	◻	2	DMC 920	Copper-MD
	❖	2	DMC 921	Copper
	◐	2	DMC 936	Avocado Green-VY DK
	■	2	DMC 939	Navy Blue-VY DK
	☾	2	DMC 946	Burnt Orange-MD
	*	2	DMC 947	Burnt Orange
	⌘	2	DMC 954	Nile Green
	⧸	2	DMC 959	Sea Green-MD
	9	2	DMC 964	Sea Green-LT
	⊕	2	DMC 970	Pumpkin-LT
	L	2	DMC 976	Golden Brown-MD
	←	2	DMC 995	Electric Blue-DK
	↓	2	DMC 996	Electric Blue-MD
	//	2	DMC 3328	Salmon-DK
	⊕	2	DMC 3340	Apricot-MD
	●	2	DMC 3371	Black Brown
	▨	2	DMC 3765	Peacock Blue-VY DK
	9	2	DMC 3766	Peacock Blue-LT
	<	2	DMC 3770	Tawny-VY LT
	∴	2	DMC 3776	Mahogany-LT
		2	DMC 3801	Christmas Red-LT
	↕	2	DMC 3804	Cyclamen Pink-DK
	⊕	2	DMC 3805	Cyclamen Pink
	)	2	DMC 3810	Turquoise-DK
	⊗	2	DMC 3820	Straw-DK
	✕	2	DMC 3832	Raspberry-MD
	∩	2	DMC 3834	Grape-DK
	⌘	2	DMC 3835	Grape-MD
	△	2	DMC 3842	Wedgewood-DK
	Z	2	DMC 3846	Bright Turquoise-LT
	▲	2	DMC 3852	Straw-VY DK
	n	2	DMC 3854	Autumn Gold-MD

**Notes:**

The middle of this pattern can be found on page 6 and is 68 stitches across and 101 stitches down.

Pattern layout using page numbers in top left.

```

1  2  3  4
5  6  7  8
9 10 11 12
13 14 15 16

```

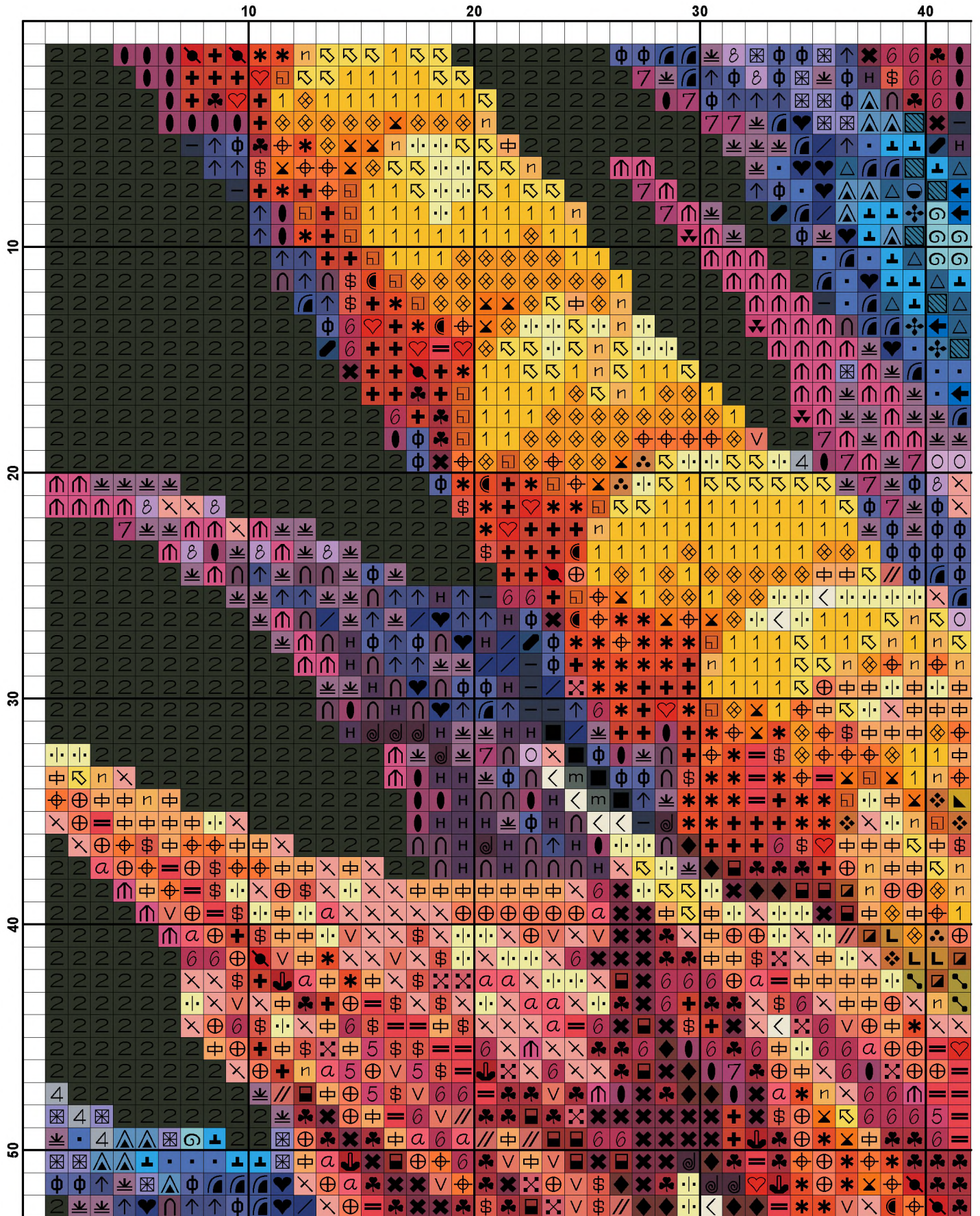
**Usage Summary**

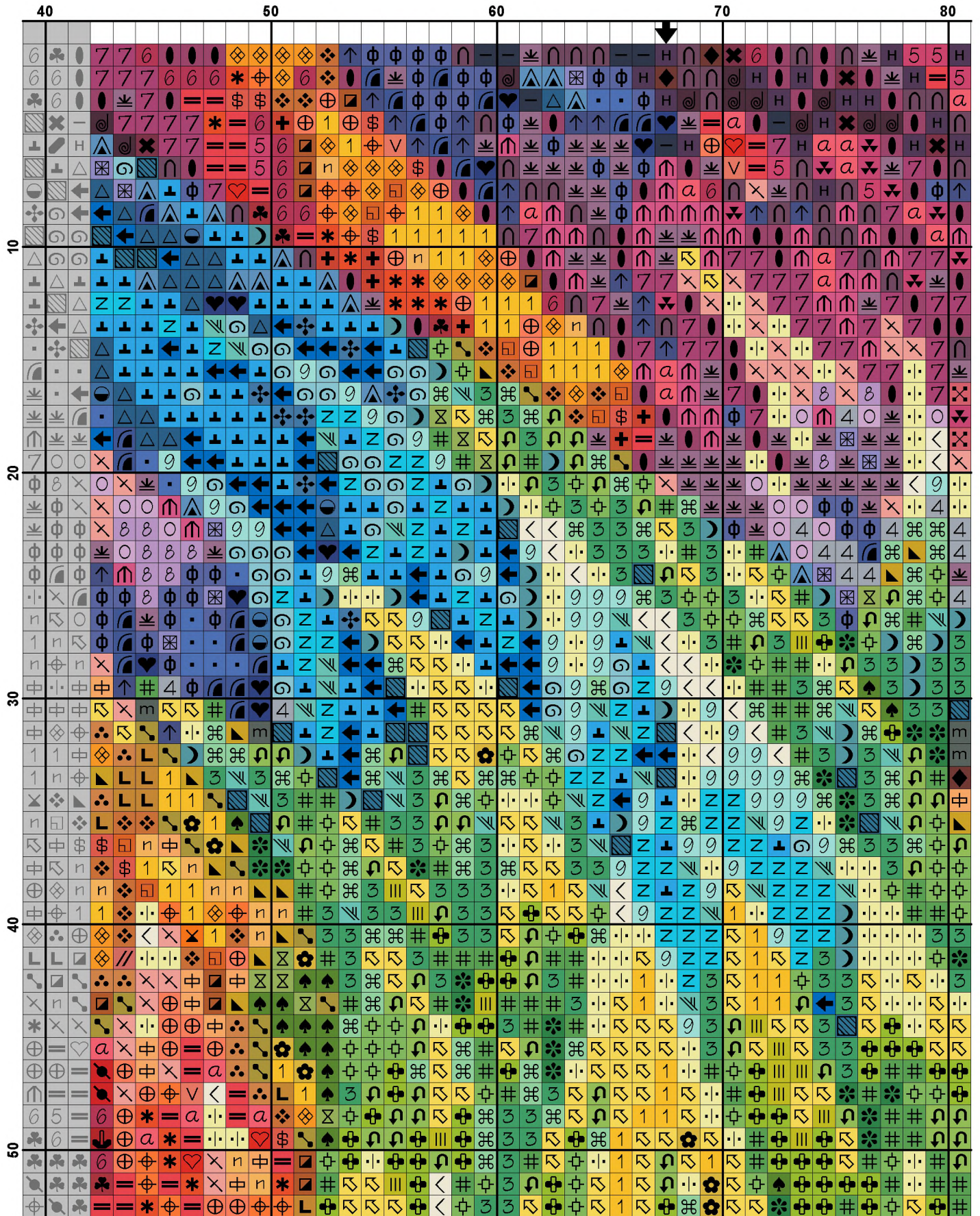
**Strands Per Skein:** 6

**Skein Length:** 313.0 in

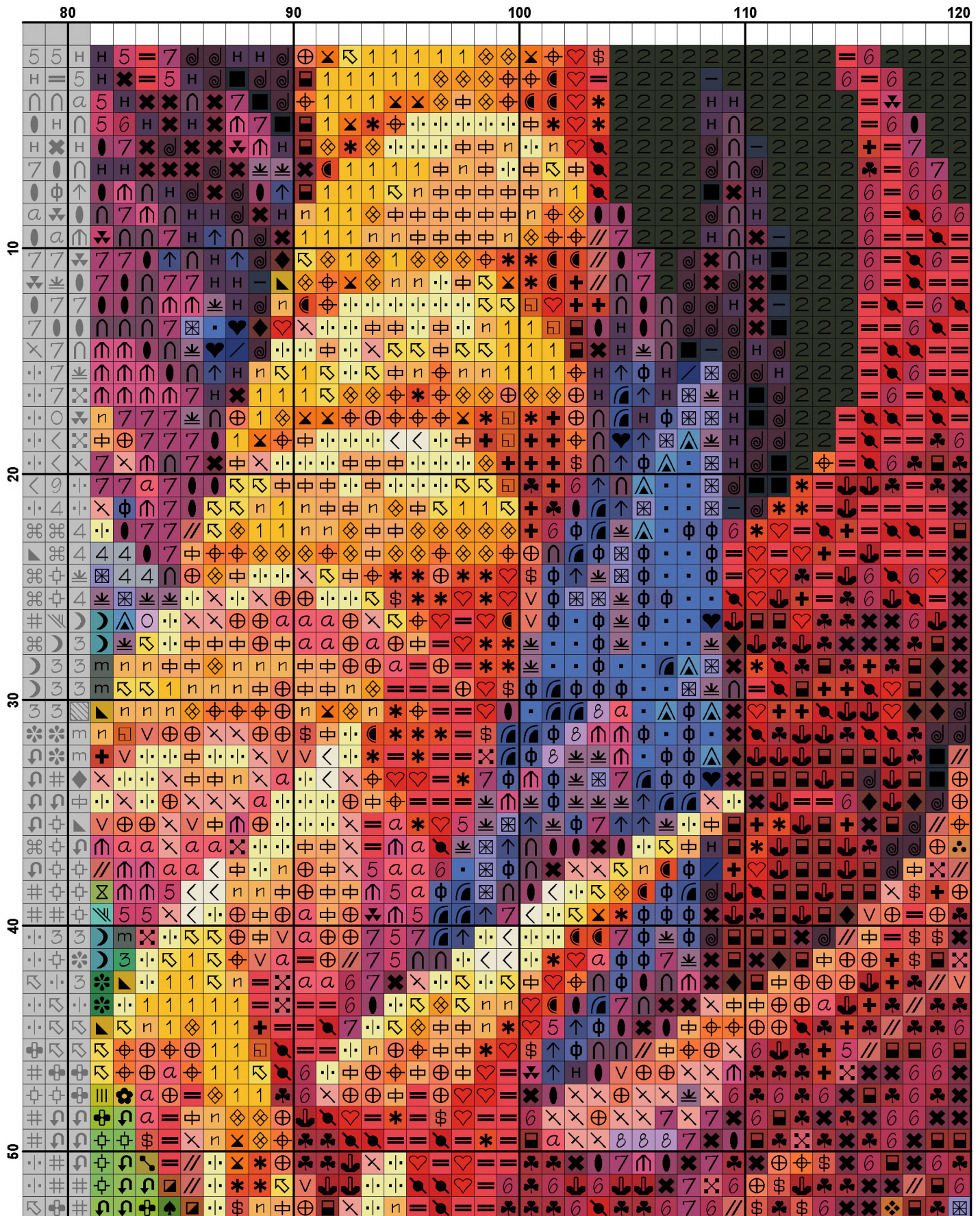
Type	Number	Full	Half	Quarter	Petite	Back(in)	Str(in)	Spec(in)	French	Bead	Skein Est.
DMC 154	154	1078	0	0	0	0.0	0.0	0.0	0	0	1.000
DMC 155	155	121	0	0	0	0.0	0.0	0.0	0	0	1.000
DMC 158	158	213	0	0	0	0.0	0.0	0.0	0	0	1.000
DMC 166	166	72	0	0	0	0.0	0.0	0.0	0	0	1.000
DMC 209	209	92	0	0	0	0.0	0.0	0.0	0	0	1.000
DMC 310	310	3002	0	0	0	0.0	0.0	0.0	0	0	2.000
DMC 318	318	34	0	0	0	0.0	0.0	0.0	0	0	1.000
DMC 321	321	427	0	0	0	0.0	0.0	0.0	0	0	1.000
DMC 326	326	375	0	0	0	0.0	0.0	0.0	0	0	1.000
DMC 340	340	26	0	0	0	0.0	0.0	0.0	0	0	1.000
DMC 350	350	149	0	0	0	0.0	0.0	0.0	0	0	1.000
DMC 351	351	54	0	0	0	0.0	0.0	0.0	0	0	1.000
DMC 413	413	56	0	0	0	0.0	0.0	0.0	0	0	1.000
DMC 471	471	49	0	0	0	0.0	0.0	0.0	0	0	1.000
DMC 498	498	451	0	0	0	0.0	0.0	0.0	0	0	1.000
DMC 517	517	81	0	0	0	0.0	0.0	0.0	0	0	1.000
DMC 550	550	629	0	0	0	0.0	0.0	0.0	0	0	1.000
DMC 554	554	79	0	0	0	0.0	0.0	0.0	0	0	1.000
DMC 600	600	482	0	0	0	0.0	0.0	0.0	0	0	1.000
DMC 601	601	98	0	0	0	0.0	0.0	0.0	0	0	1.000
DMC 606	606	421	0	0	0	0.0	0.0	0.0	0	0	1.000
DMC 666	666	407	0	0	0	0.0	0.0	0.0	0	0	1.000
DMC 700	700	136	0	0	0	0.0	0.0	0.0	0	0	1.000
DMC 702	702	170	0	0	0	0.0	0.0	0.0	0	0	1.000
DMC 703	703	119	0	0	0	0.0	0.0	0.0	0	0	1.000
DMC 704	704	130	0	0	0	0.0	0.0	0.0	0	0	1.000
DMC 718	718	303	0	0	0	0.0	0.0	0.0	0	0	1.000
DMC 720	720	89	0	0	0	0.0	0.0	0.0	0	0	1.000
DMC 722	722	327	0	0	0	0.0	0.0	0.0	0	0	1.000
DMC 740	740	166	0	0	0	0.0	0.0	0.0	0	0	1.000
DMC 741	741	530	0	0	0	0.0	0.0	0.0	0	0	1.000
DMC 742	742	711	0	0	0	0.0	0.0	0.0	0	0	1.000
DMC 743	743	736	0	0	0	0.0	0.0	0.0	0	0	1.000
DMC 745	745	541	0	0	0	0.0	0.0	0.0	0	0	1.000
DMC 760	760	489	0	0	0	0.0	0.0	0.0	0	0	1.000
DMC 792	792	286	0	0	0	0.0	0.0	0.0	0	0	1.000
DMC 796	796	230	0	0	0	0.0	0.0	0.0	0	0	1.000
DMC 797	797	233	0	0	0	0.0	0.0	0.0	0	0	1.000
DMC 798	798	202	0	0	0	0.0	0.0	0.0	0	0	1.000
DMC 803	803	228	0	0	0	0.0	0.0	0.0	0	0	1.000
DMC 814	814	514	0	0	0	0.0	0.0	0.0	0	0	1.000
DMC 817	817	140	0	0	0	0.0	0.0	0.0	0	0	1.000
DMC 820	820	788	0	0	0	0.0	0.0	0.0	0	0	1.000
DMC 823	823	439	0	0	0	0.0	0.0	0.0	0	0	1.000
DMC 825	825	59	0	0	0	0.0	0.0	0.0	0	0	1.000
DMC 826	826	101	0	0	0	0.0	0.0	0.0	0	0	1.000
DMC 832	832	118	0	0	0	0.0	0.0	0.0	0	0	1.000
DMC 890	890	214	0	0	0	0.0	0.0	0.0	0	0	1.000
DMC 892	892	174	0	0	0	0.0	0.0	0.0	0	0	1.000
DMC 900	900	270	0	0	0	0.0	0.0	0.0	0	0	1.000
DMC 905	905	113	0	0	0	0.0	0.0	0.0	0	0	1.000

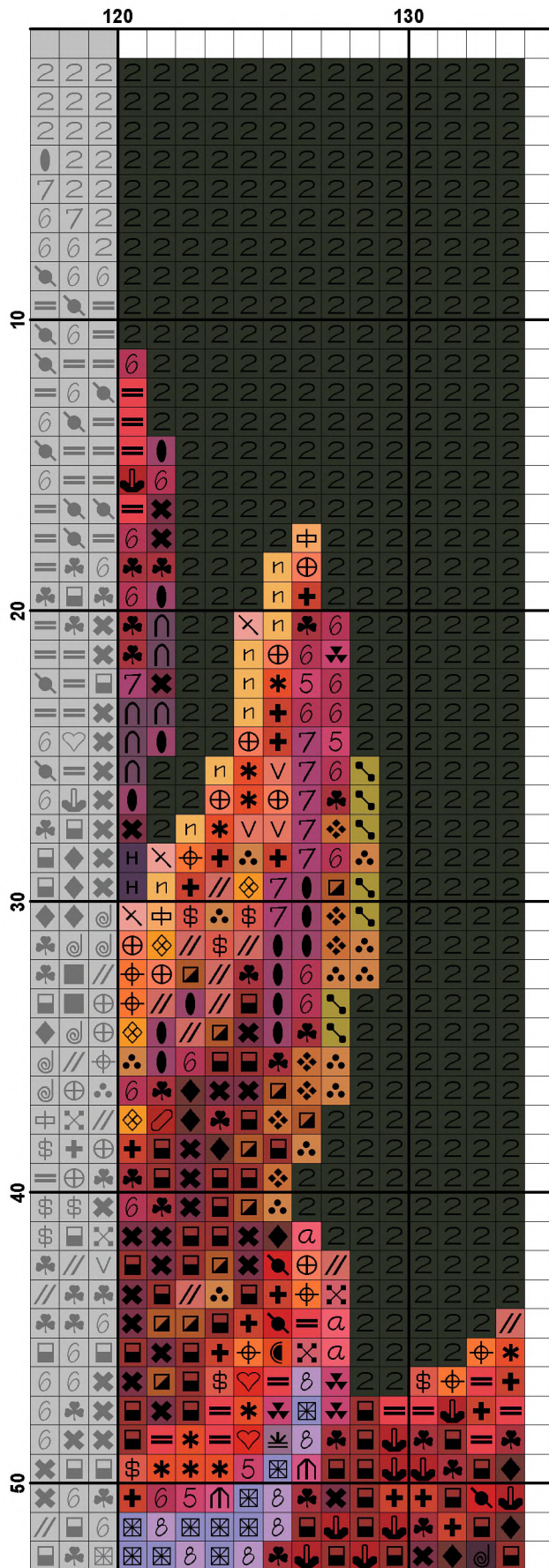
Type	Number	Full	Half	Quarter	Petite	Back(in)	Str(in)	Spec(in)	French	Bead	Skein Est.
DMC	907	140	0	0	0	0.0	0.0	0.0	0	0	1.000
DMC	911	147	0	0	0	0.0	0.0	0.0	0	0	1.000
DMC	915	948	0	0	0	0.0	0.0	0.0	0	0	1.000
DMC	917	410	0	0	0	0.0	0.0	0.0	0	0	1.000
DMC	920	72	0	0	0	0.0	0.0	0.0	0	0	1.000
DMC	921	56	0	0	0	0.0	0.0	0.0	0	0	1.000
DMC	936	95	0	0	0	0.0	0.0	0.0	0	0	1.000
DMC	939	1810	0	0	0	0.0	0.0	0.0	0	0	2.000
DMC	946	112	0	0	0	0.0	0.0	0.0	0	0	1.000
DMC	947	506	0	0	0	0.0	0.0	0.0	0	0	1.000
DMC	954	82	0	0	0	0.0	0.0	0.0	0	0	1.000
DMC	959	62	0	0	0	0.0	0.0	0.0	0	0	1.000
DMC	964	65	0	0	0	0.0	0.0	0.0	0	0	1.000
DMC	970	556	0	0	0	0.0	0.0	0.0	0	0	1.000
DMC	976	39	0	0	0	0.0	0.0	0.0	0	0	1.000
DMC	995	322	0	0	0	0.0	0.0	0.0	0	0	1.000
DMC	996	420	0	0	0	0.0	0.0	0.0	0	0	1.000
DMC	3328	55	0	0	0	0.0	0.0	0.0	0	0	1.000
DMC	3340	308	0	0	0	0.0	0.0	0.0	0	0	1.000
DMC	3371	110	0	0	0	0.0	0.0	0.0	0	0	1.000
DMC	3765	350	0	0	0	0.0	0.0	0.0	0	0	1.000
DMC	3766	72	0	0	0	0.0	0.0	0.0	0	0	1.000
DMC	3770	163	0	0	0	0.0	0.0	0.0	0	0	1.000
DMC	3776	63	0	0	0	0.0	0.0	0.0	0	0	1.000
DMC	3801	503	0	0	0	0.0	0.0	0.0	0	0	1.000
DMC	3804	74	0	0	0	0.0	0.0	0.0	0	0	1.000
DMC	3805	339	0	0	0	0.0	0.0	0.0	0	0	1.000
DMC	3810	93	0	0	0	0.0	0.0	0.0	0	0	1.000
DMC	3820	71	0	0	0	0.0	0.0	0.0	0	0	1.000
DMC	3832	56	0	0	0	0.0	0.0	0.0	0	0	1.000
DMC	3834	366	0	0	0	0.0	0.0	0.0	0	0	1.000
DMC	3835	294	0	0	0	0.0	0.0	0.0	0	0	1.000
DMC	3842	349	0	0	0	0.0	0.0	0.0	0	0	1.000
DMC	3846	148	0	0	0	0.0	0.0	0.0	0	0	1.000
DMC	3852	82	0	0	0	0.0	0.0	0.0	0	0	1.000
DMC	3854	310	0	0	0	0.0	0.0	0.0	0	0	1.000

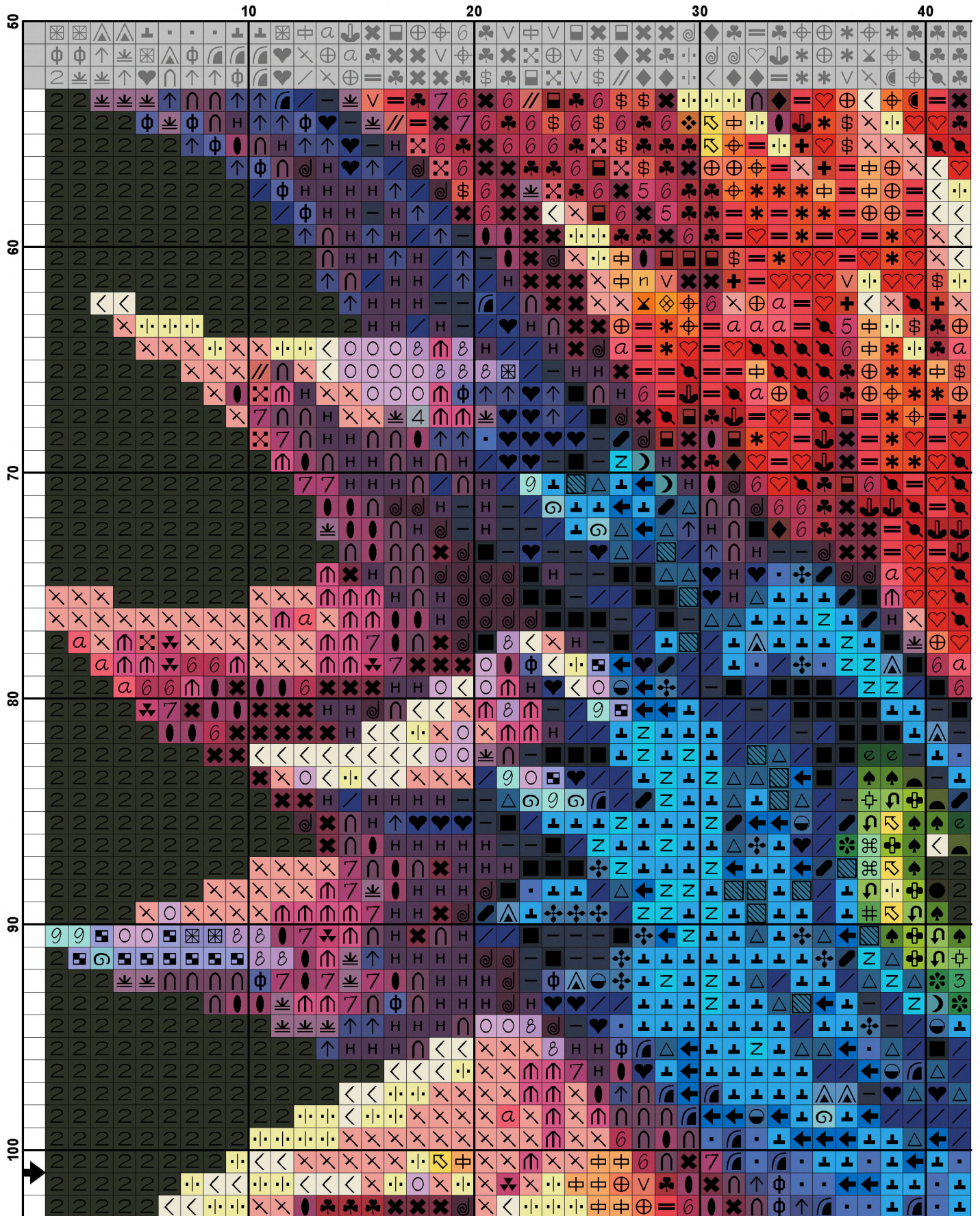


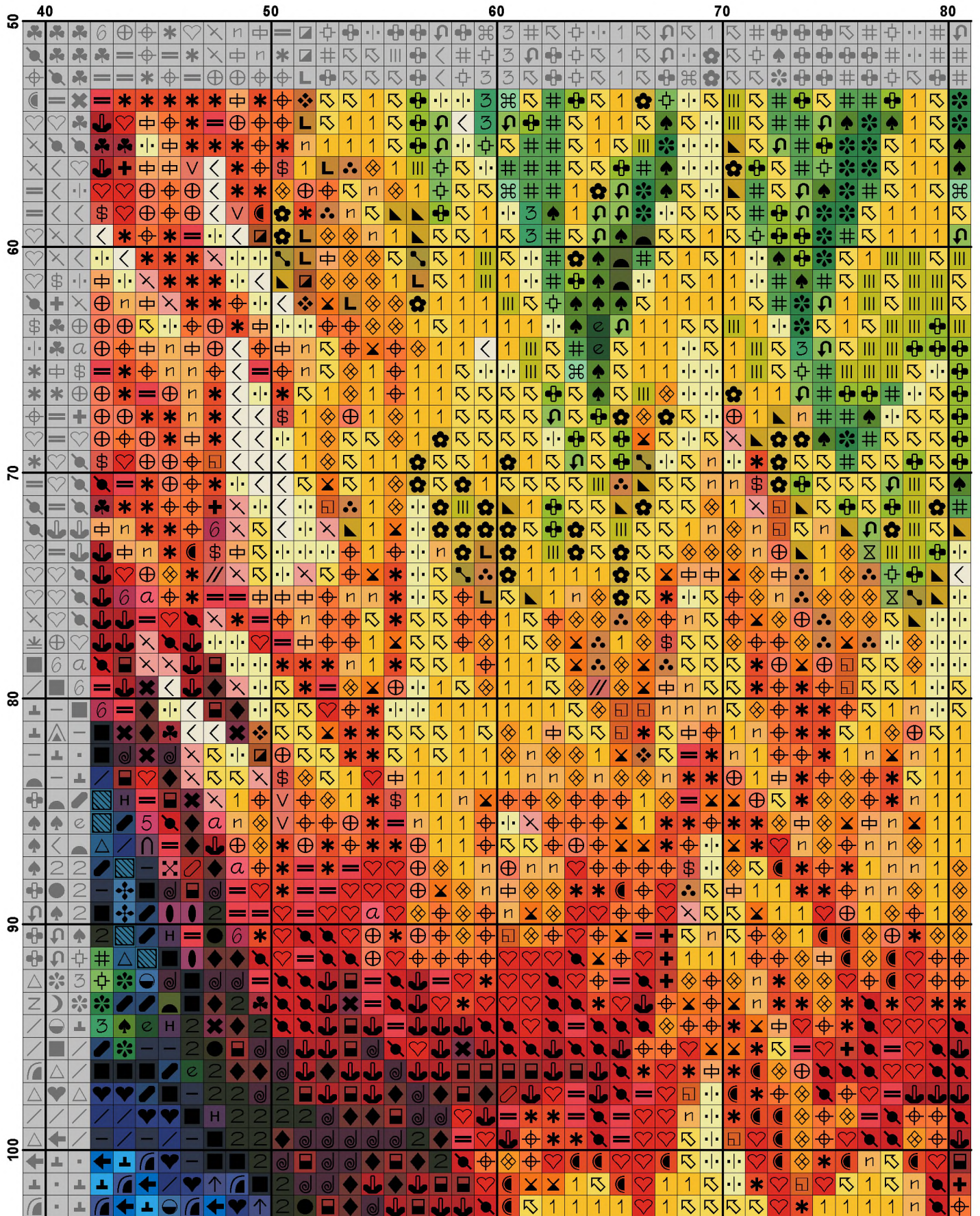


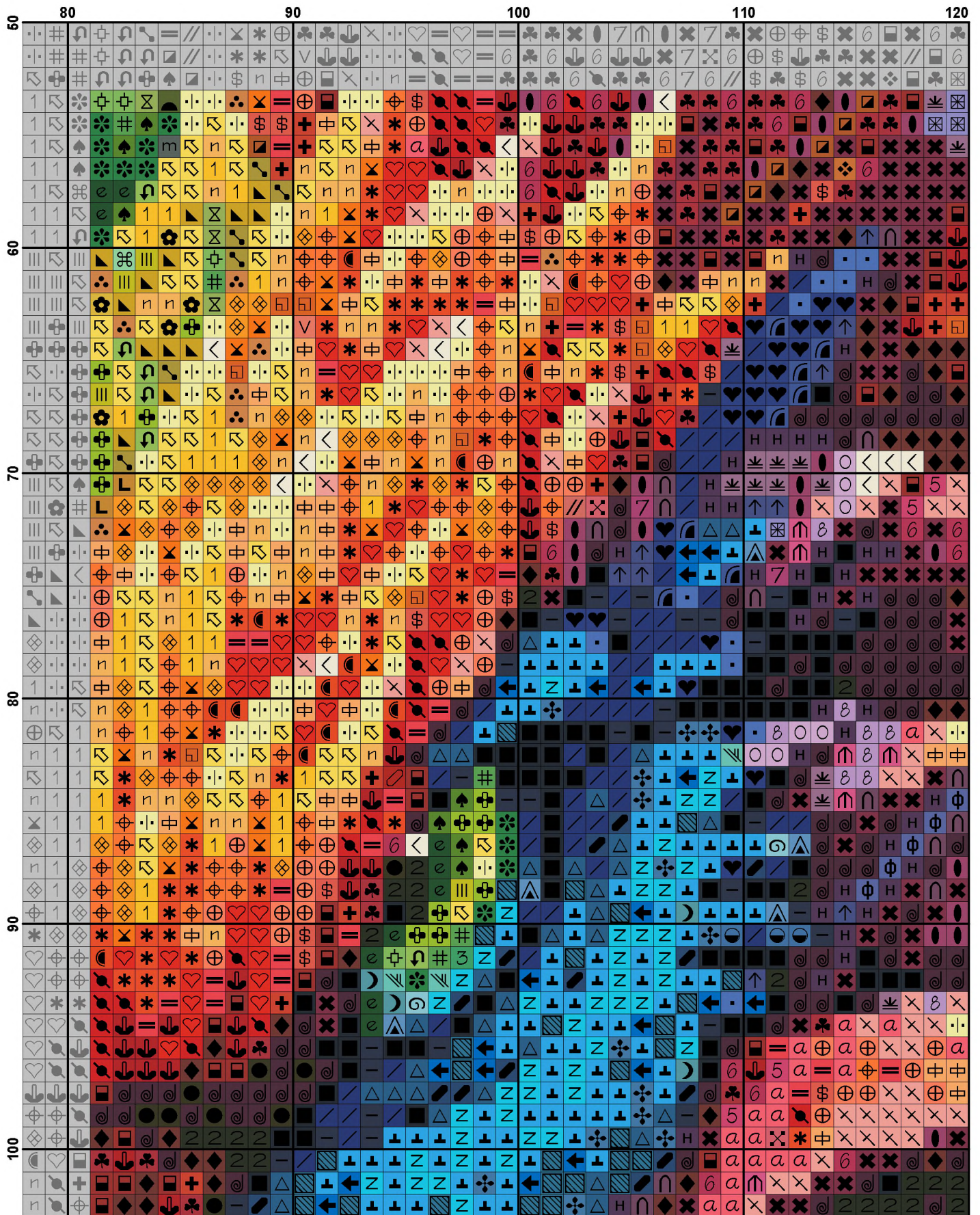


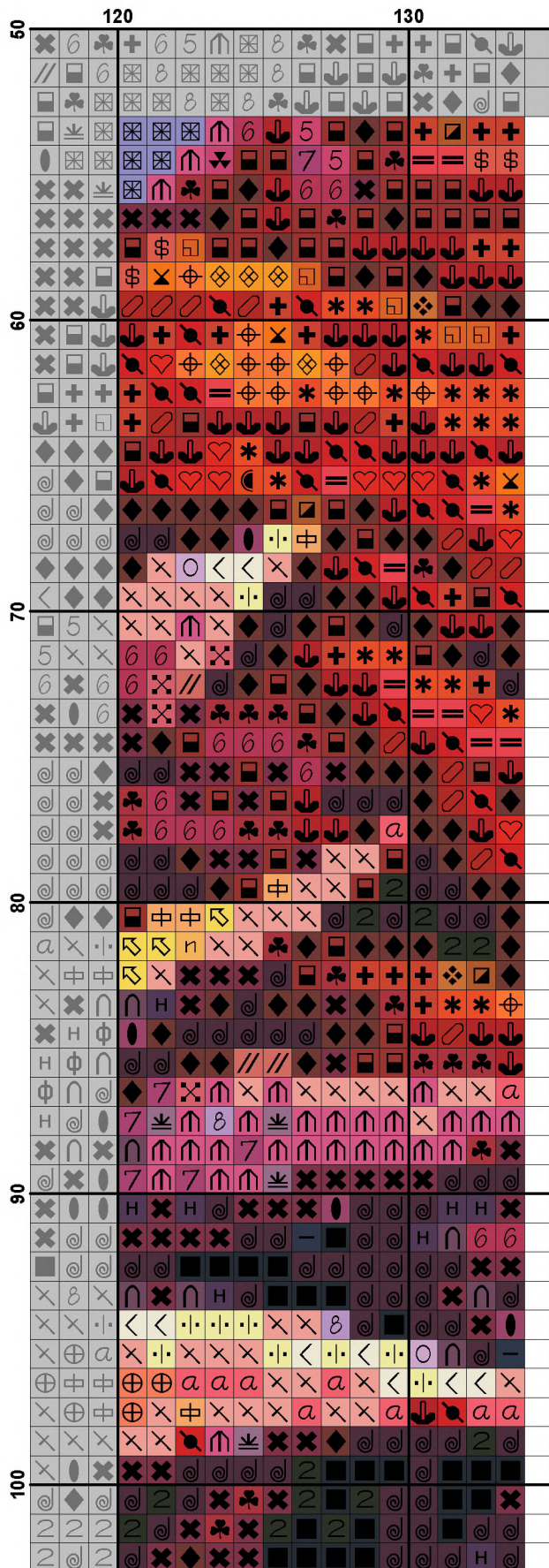


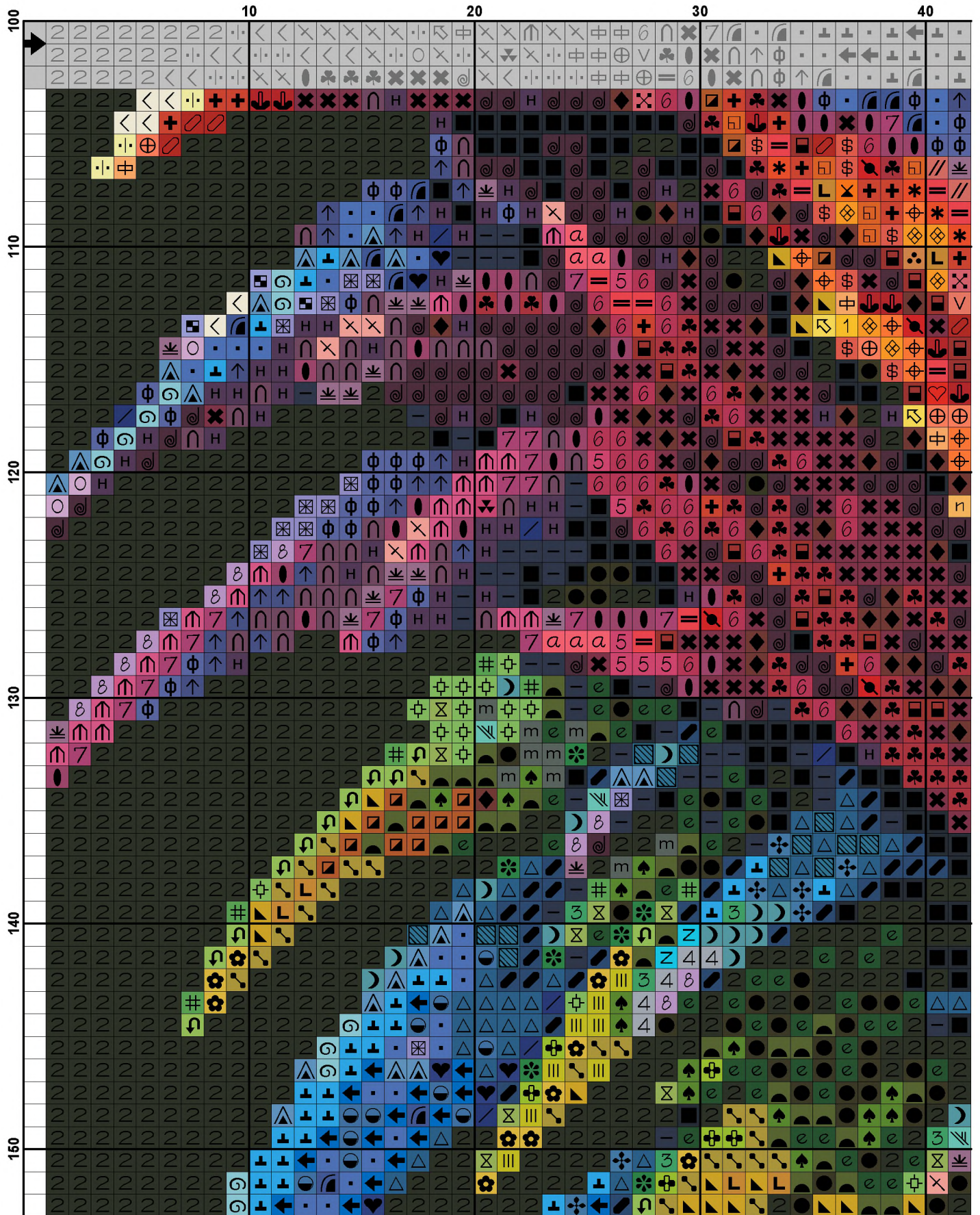


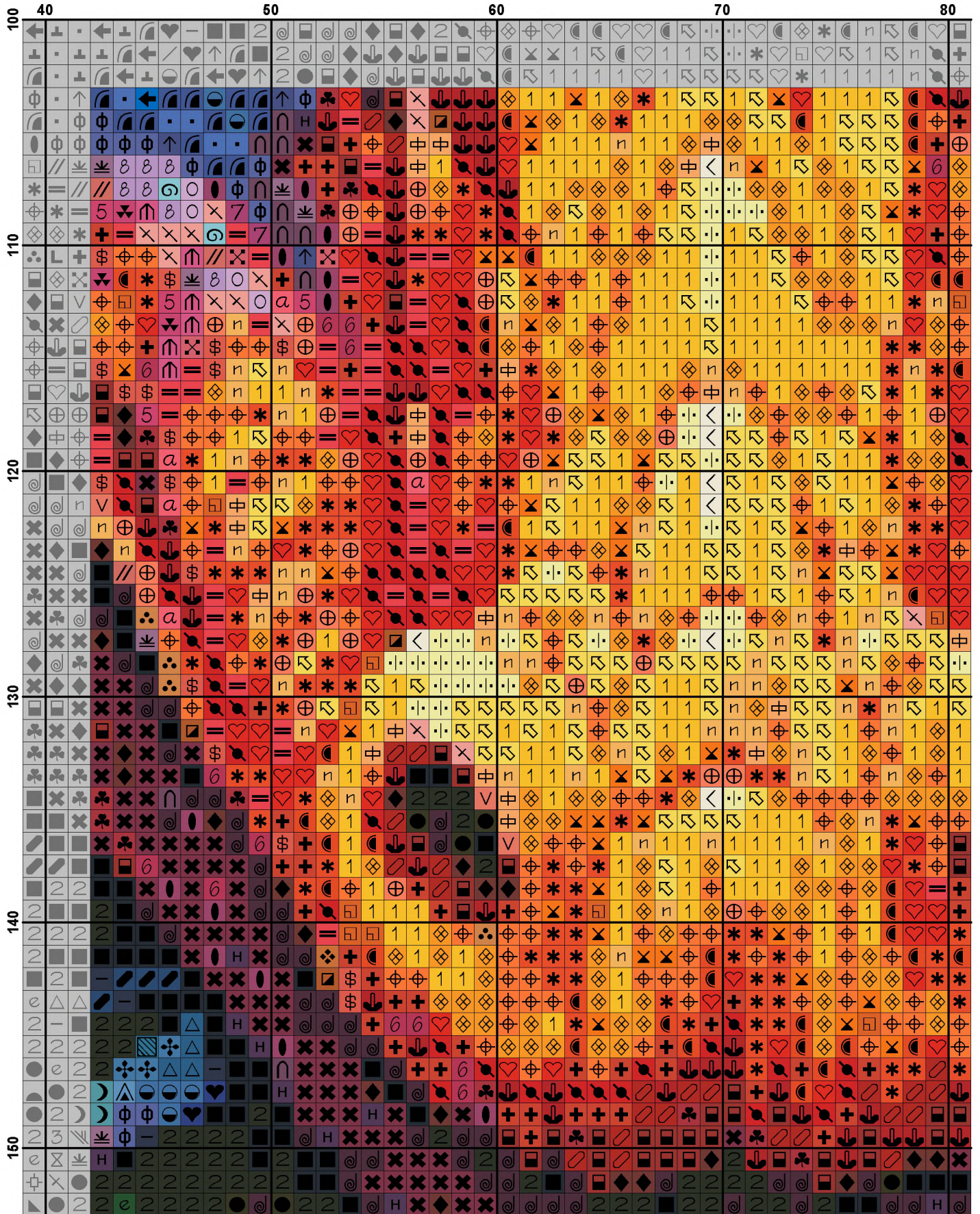




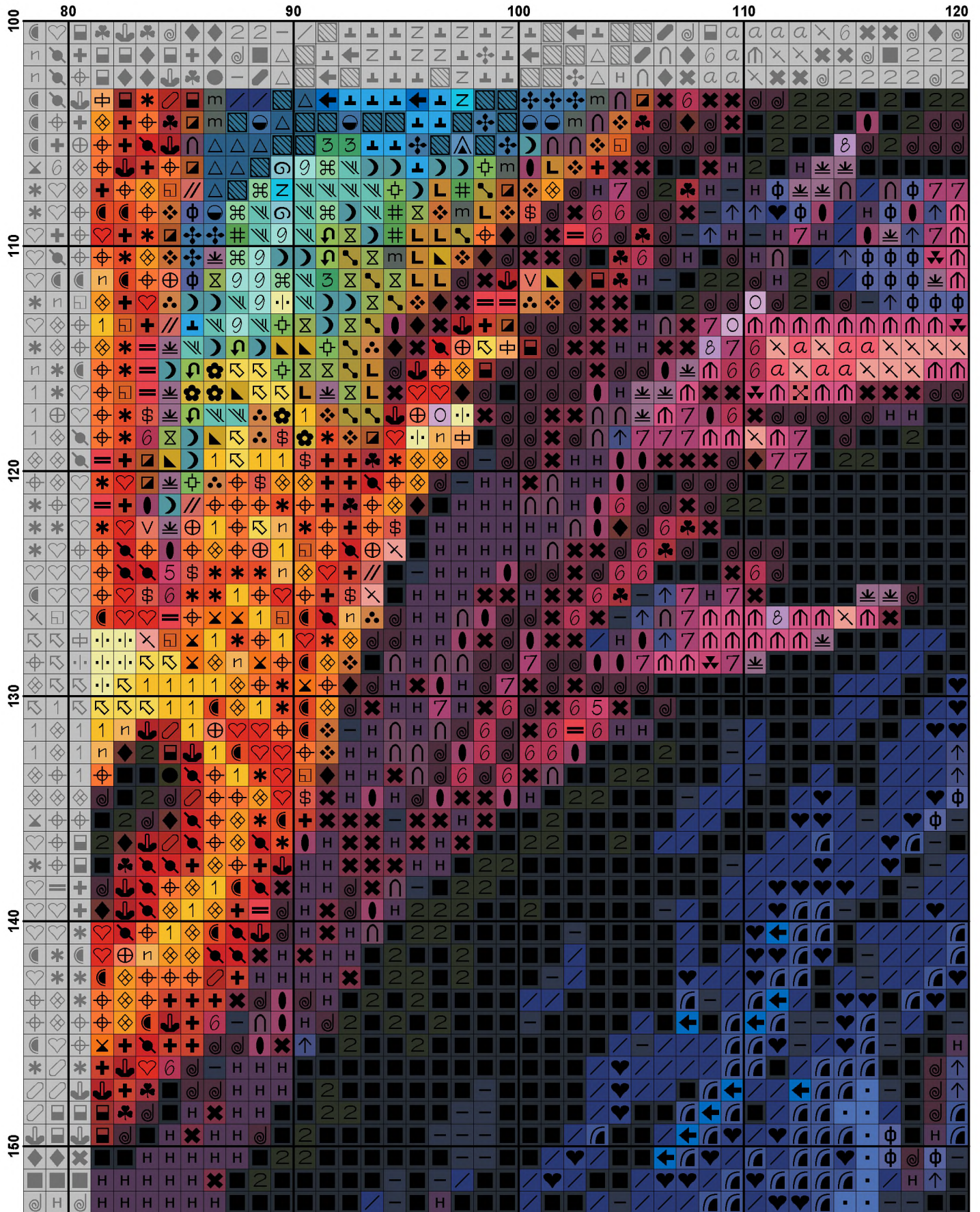


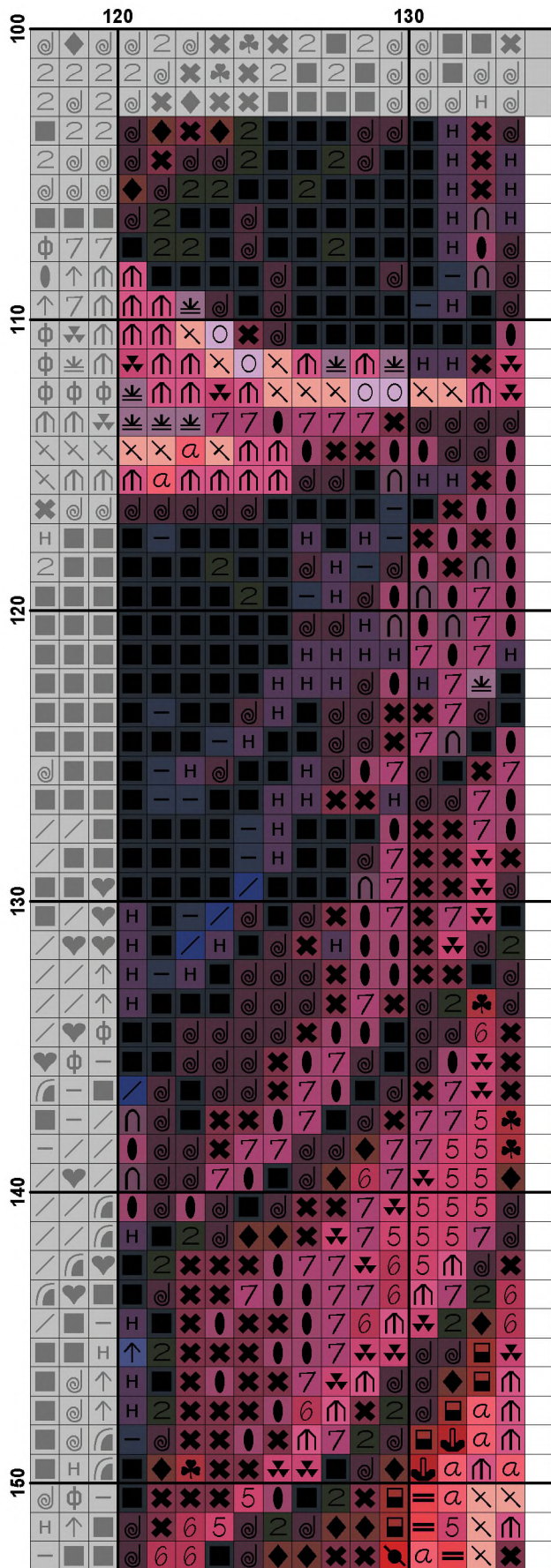


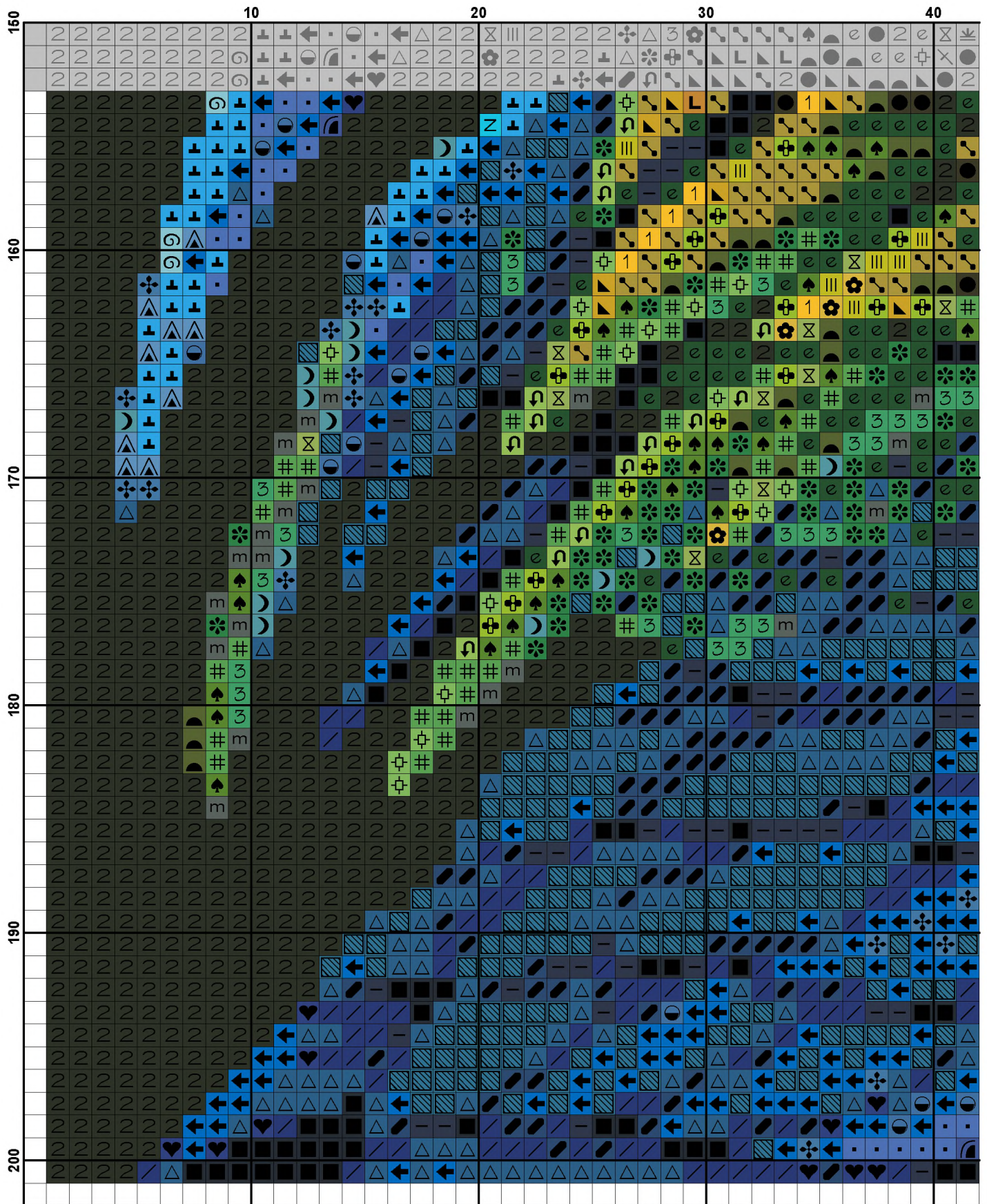


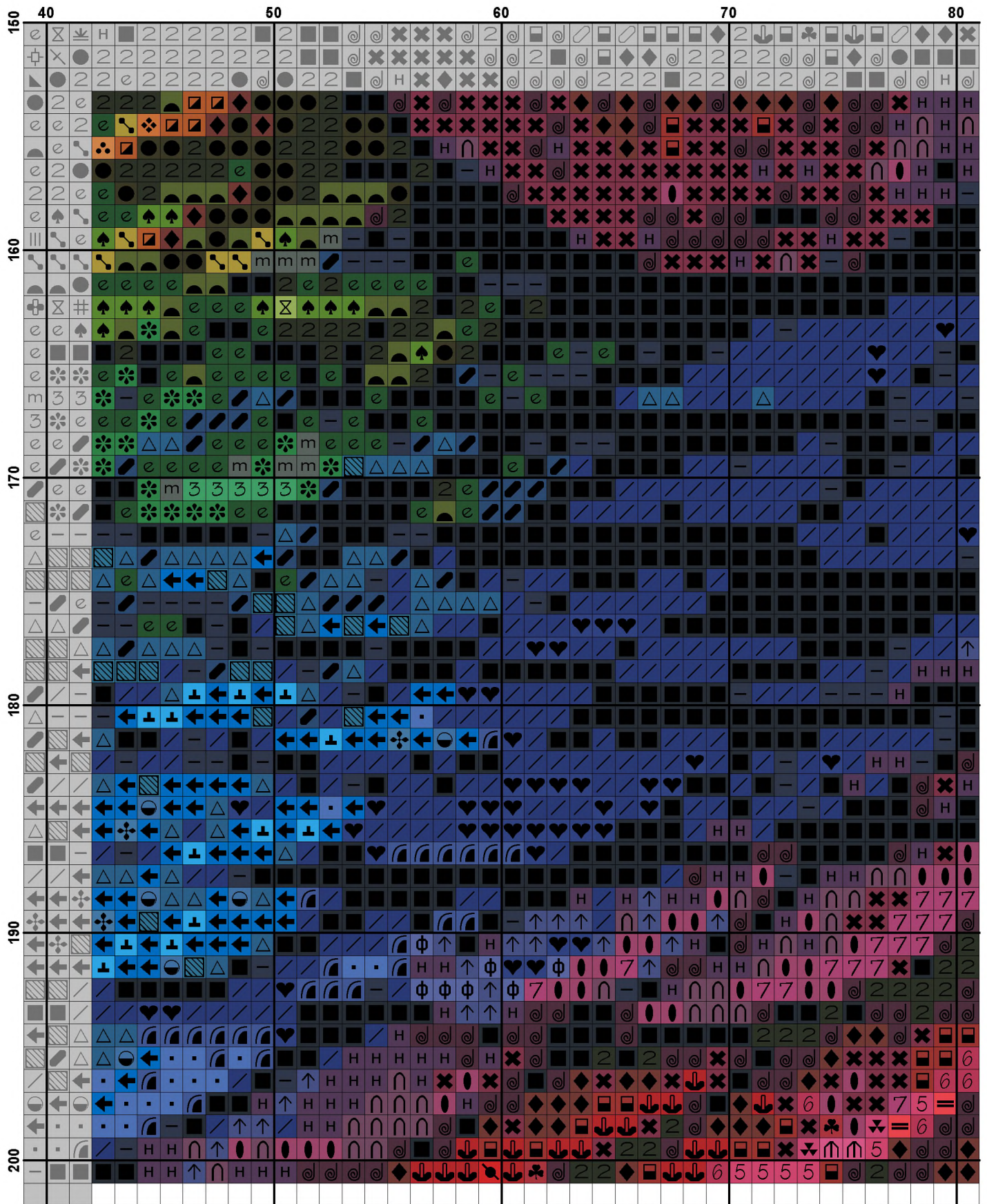


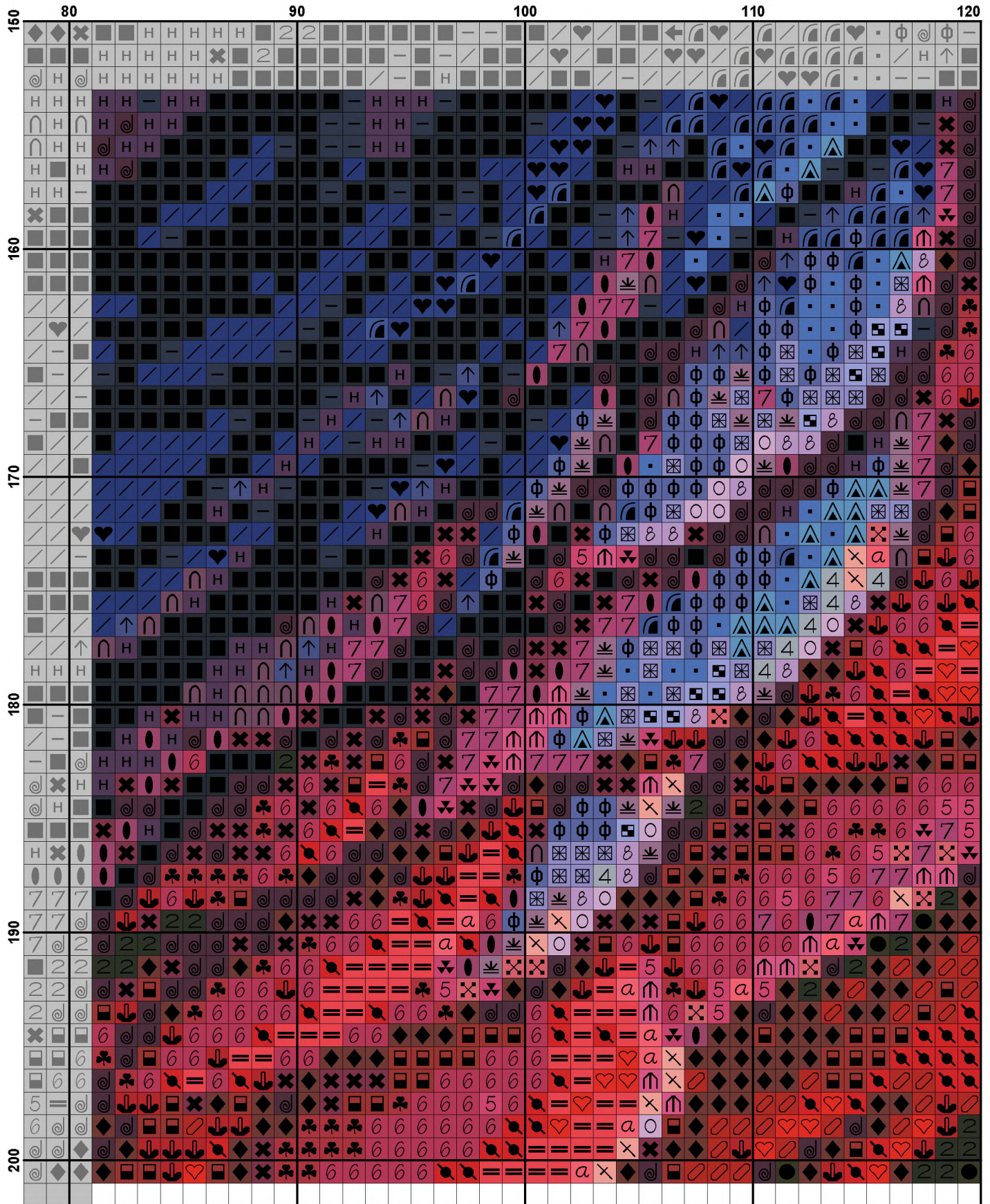


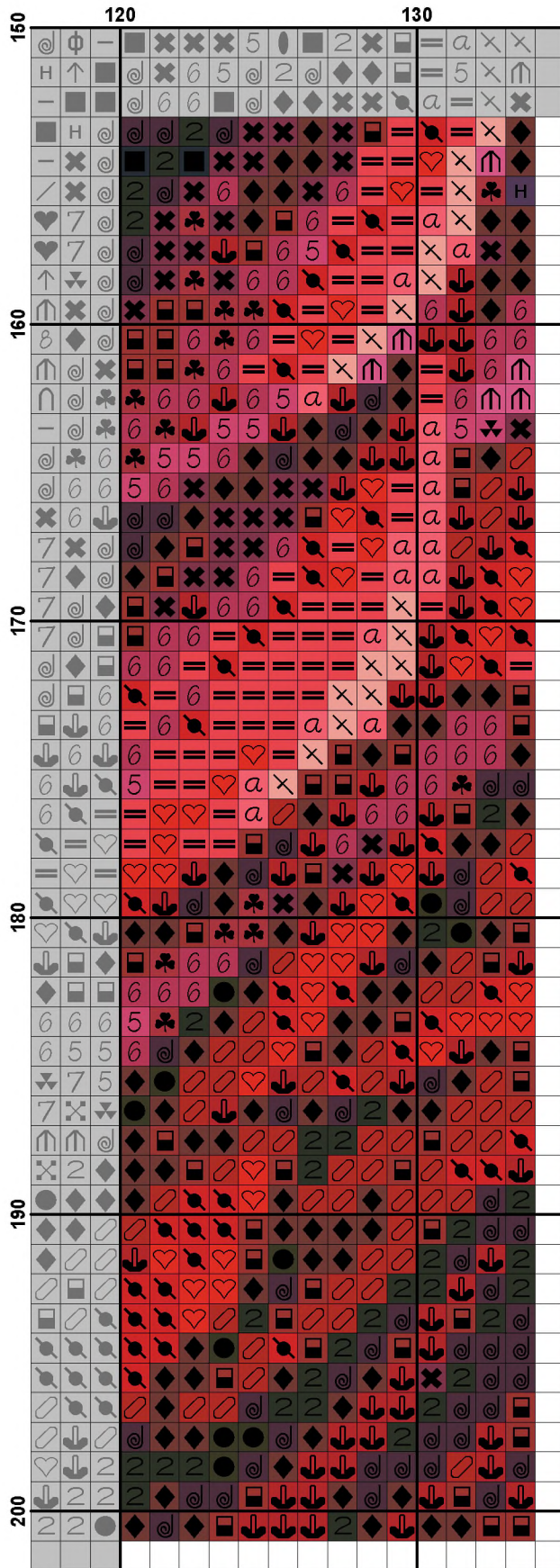












**Pattern Name:** Mini Rainbow Dragon 3  
**Designed By:** Artwork by Tereena Clarke  
**Company:** Artecy Cross Stitch  
**Copyright:** Copyright Artecy Cross Stitch. All rights Reserved.  
**Fabric:** Aida 14, White  
 133w X 200h Stitches  
**Size(s):** 14 Count, 9-1/2w X 14-1/4h in  
 16 Count, 8-1/4w X 12-1/2h in  
 18 Count, 7-3/8w X 11h in

**Floss Used for Full Stitches:**

Symbol	Strands	Type	Number	Color
	2	DMC	154	Grape-VY DK
	2	DMC	155	Blue Violet-MD DK
	2	DMC	158	Cornflower Blue-MD VY DK
	2	DMC	166	Moss Green-MD LT
	2	DMC	209	Lavender-DK
	2	DMC	310	Black
	2	DMC	318	Steel Gray-LT
	2	DMC	321	Christmas Red
	2	DMC	326	Rose-VY DK
	2	DMC	340	Blue Violet-MD
	2	DMC	350	Coral-MD
	2	DMC	351	Coral
	2	DMC	413	Pewter Gray-DK
	2	DMC	471	Avocado Green-VY LT
	2	DMC	498	Christmas Red-DK
	2	DMC	517	Wedgewood-DK
	2	DMC	550	Violet-VY DK
	2	DMC	554	Violet-LT
	2	DMC	600	Cranberry-VY DK
	2	DMC	601	Cranberry-DK
	2	DMC	606	Bright Orange-Red
	2	DMC	666	Christmas Red-BRT
	2	DMC	700	Christmas Green-BRT
	2	DMC	702	Kelly Green
	2	DMC	703	Chartreuse
	2	DMC	704	Chartreuse-BRT
	2	DMC	718	Plum
	2	DMC	720	Orange Spice-DK
	2	DMC	722	Orange Spice-LT
	2	DMC	740	Tangerine
	2	DMC	741	Tangerine-MD
	2	DMC	742	Tangerine-LT
	2	DMC	743	Yellow-MD
	2	DMC	745	Yellow-LT Pale
	2	DMC	760	Salmon
	2	DMC	792	Cornflower Blue-DK
	2	DMC	796	Royal Blue-DK
	2	DMC	797	Royal Blue
	2	DMC	798	Delft Blue-DK
	2	DMC	803	Baby Blue-UL VY DK
	2	DMC	814	Garnet-DK
	2	DMC	817	Coral Red-VY DK
	2	DMC	820	Royal Blue-VY DK
	2	DMC	823	Navy Blue-DK
	2	DMC	825	Blue-DK

Symbol	Strands	Type	Number	Color
	2	DMC	826	Blue-MD
	2	DMC	832	Golden Olive
	2	DMC	890	Pistachio Green-UL DK
	2	DMC	892	Carnation-MD
	2	DMC	900	Burnt Orange-DK
	2	DMC	905	Parrot Green-DK
	2	DMC	907	Parrot Green-LT
	2	DMC	911	Emerald Green-MD
	2	DMC	915	Plum-DK
	2	DMC	917	Plum-MD
	2	DMC	920	Copper-MD
	2	DMC	921	Copper
	2	DMC	936	Avocado Green-VY DK
	2	DMC	939	Navy Blue-VY DK
	2	DMC	946	Burnt Orange-MD
	2	DMC	947	Burnt Orange
	2	DMC	954	Nile Green
	2	DMC	959	Sea Green-MD
	2	DMC	964	Sea Green-LT
	2	DMC	970	Pumpkin-LT
	2	DMC	976	Golden Brown-MD
	2	DMC	995	Electric Blue-DK
	2	DMC	996	Electric Blue-MD
	2	DMC	3328	Salmon-DK
	2	DMC	3340	Apricot-MD
	2	DMC	3371	Black Brown
	2	DMC	3765	Peacock Blue-VY DK
	2	DMC	3766	Peacock Blue-LT
	2	DMC	3770	Tawny-VY LT
	2	DMC	3776	Mahogany-LT
	2	DMC	3801	Christmas Red-LT
	2	DMC	3804	Cyclamen Pink-DK
	2	DMC	3805	Cyclamen Pink
	2	DMC	3810	Turquoise-DK
	2	DMC	3820	Straw-DK
	2	DMC	3832	Raspberry-MD
	2	DMC	3834	Grape-DK
	2	DMC	3835	Grape-MD
	2	DMC	3842	Wedgewood-DK
	2	DMC	3846	Bright Turquoise-LT
	2	DMC	3852	Straw-VY DK
	2	DMC	3854	Autumn Gold-MD

**Notes:**

The middle of this pattern can be found on page 6 and is 68 stitches across and 101 stitches down.

Pattern layout using page numbers in top left.

```

1  2  3  4
5  6  7  8
9 10 11 12
13 14 15 16

```



**Usage Summary**

**Strands Per Skein:** 6

**Skein Length:** 313.0 in

Type	Number	Full	Half	Quarter	Petite	Back(in)	Str(in)	Spec(in)	French	Bead	Skein Est.
DMC 154	154	1078	0	0	0	0.0	0.0	0.0	0	0	1.000
DMC 155	155	121	0	0	0	0.0	0.0	0.0	0	0	1.000
DMC 158	158	213	0	0	0	0.0	0.0	0.0	0	0	1.000
DMC 166	166	72	0	0	0	0.0	0.0	0.0	0	0	1.000
DMC 209	209	92	0	0	0	0.0	0.0	0.0	0	0	1.000
DMC 310	310	3002	0	0	0	0.0	0.0	0.0	0	0	2.000
DMC 318	318	34	0	0	0	0.0	0.0	0.0	0	0	1.000
DMC 321	321	427	0	0	0	0.0	0.0	0.0	0	0	1.000
DMC 326	326	375	0	0	0	0.0	0.0	0.0	0	0	1.000
DMC 340	340	26	0	0	0	0.0	0.0	0.0	0	0	1.000
DMC 350	350	149	0	0	0	0.0	0.0	0.0	0	0	1.000
DMC 351	351	54	0	0	0	0.0	0.0	0.0	0	0	1.000
DMC 413	413	56	0	0	0	0.0	0.0	0.0	0	0	1.000
DMC 471	471	49	0	0	0	0.0	0.0	0.0	0	0	1.000
DMC 498	498	451	0	0	0	0.0	0.0	0.0	0	0	1.000
DMC 517	517	81	0	0	0	0.0	0.0	0.0	0	0	1.000
DMC 550	550	629	0	0	0	0.0	0.0	0.0	0	0	1.000
DMC 554	554	79	0	0	0	0.0	0.0	0.0	0	0	1.000
DMC 600	600	482	0	0	0	0.0	0.0	0.0	0	0	1.000
DMC 601	601	98	0	0	0	0.0	0.0	0.0	0	0	1.000
DMC 606	606	421	0	0	0	0.0	0.0	0.0	0	0	1.000
DMC 666	666	407	0	0	0	0.0	0.0	0.0	0	0	1.000
DMC 700	700	136	0	0	0	0.0	0.0	0.0	0	0	1.000
DMC 702	702	170	0	0	0	0.0	0.0	0.0	0	0	1.000
DMC 703	703	119	0	0	0	0.0	0.0	0.0	0	0	1.000
DMC 704	704	130	0	0	0	0.0	0.0	0.0	0	0	1.000
DMC 718	718	303	0	0	0	0.0	0.0	0.0	0	0	1.000
DMC 720	720	89	0	0	0	0.0	0.0	0.0	0	0	1.000
DMC 722	722	327	0	0	0	0.0	0.0	0.0	0	0	1.000
DMC 740	740	166	0	0	0	0.0	0.0	0.0	0	0	1.000
DMC 741	741	530	0	0	0	0.0	0.0	0.0	0	0	1.000
DMC 742	742	711	0	0	0	0.0	0.0	0.0	0	0	1.000
DMC 743	743	736	0	0	0	0.0	0.0	0.0	0	0	1.000
DMC 745	745	541	0	0	0	0.0	0.0	0.0	0	0	1.000
DMC 760	760	489	0	0	0	0.0	0.0	0.0	0	0	1.000
DMC 792	792	286	0	0	0	0.0	0.0	0.0	0	0	1.000
DMC 796	796	230	0	0	0	0.0	0.0	0.0	0	0	1.000
DMC 797	797	233	0	0	0	0.0	0.0	0.0	0	0	1.000
DMC 798	798	202	0	0	0	0.0	0.0	0.0	0	0	1.000
DMC 803	803	228	0	0	0	0.0	0.0	0.0	0	0	1.000
DMC 814	814	514	0	0	0	0.0	0.0	0.0	0	0	1.000
DMC 817	817	140	0	0	0	0.0	0.0	0.0	0	0	1.000
DMC 820	820	788	0	0	0	0.0	0.0	0.0	0	0	1.000
DMC 823	823	439	0	0	0	0.0	0.0	0.0	0	0	1.000
DMC 825	825	59	0	0	0	0.0	0.0	0.0	0	0	1.000
DMC 826	826	101	0	0	0	0.0	0.0	0.0	0	0	1.000
DMC 832	832	118	0	0	0	0.0	0.0	0.0	0	0	1.000
DMC 890	890	214	0	0	0	0.0	0.0	0.0	0	0	1.000
DMC 892	892	174	0	0	0	0.0	0.0	0.0	0	0	1.000
DMC 900	900	270	0	0	0	0.0	0.0	0.0	0	0	1.000
DMC 905	905	113	0	0	0	0.0	0.0	0.0	0	0	1.000

Type	Number	Full	Half	Quarter	Petite	Back(in)	Str(in)	Spec(in)	French	Bead	Skein Est.
DMC	907	140	0	0	0	0.0	0.0	0.0	0	0	1.000
DMC	911	147	0	0	0	0.0	0.0	0.0	0	0	1.000
DMC	915	948	0	0	0	0.0	0.0	0.0	0	0	1.000
DMC	917	410	0	0	0	0.0	0.0	0.0	0	0	1.000
DMC	920	72	0	0	0	0.0	0.0	0.0	0	0	1.000
DMC	921	56	0	0	0	0.0	0.0	0.0	0	0	1.000
DMC	936	95	0	0	0	0.0	0.0	0.0	0	0	1.000
DMC	939	1810	0	0	0	0.0	0.0	0.0	0	0	2.000
DMC	946	112	0	0	0	0.0	0.0	0.0	0	0	1.000
DMC	947	506	0	0	0	0.0	0.0	0.0	0	0	1.000
DMC	954	82	0	0	0	0.0	0.0	0.0	0	0	1.000
DMC	959	62	0	0	0	0.0	0.0	0.0	0	0	1.000
DMC	964	65	0	0	0	0.0	0.0	0.0	0	0	1.000
DMC	970	556	0	0	0	0.0	0.0	0.0	0	0	1.000
DMC	976	39	0	0	0	0.0	0.0	0.0	0	0	1.000
DMC	995	322	0	0	0	0.0	0.0	0.0	0	0	1.000
DMC	996	420	0	0	0	0.0	0.0	0.0	0	0	1.000
DMC	3328	55	0	0	0	0.0	0.0	0.0	0	0	1.000
DMC	3340	308	0	0	0	0.0	0.0	0.0	0	0	1.000
DMC	3371	110	0	0	0	0.0	0.0	0.0	0	0	1.000
DMC	3765	350	0	0	0	0.0	0.0	0.0	0	0	1.000
DMC	3766	72	0	0	0	0.0	0.0	0.0	0	0	1.000
DMC	3770	163	0	0	0	0.0	0.0	0.0	0	0	1.000
DMC	3776	63	0	0	0	0.0	0.0	0.0	0	0	1.000
DMC	3801	503	0	0	0	0.0	0.0	0.0	0	0	1.000
DMC	3804	74	0	0	0	0.0	0.0	0.0	0	0	1.000
DMC	3805	339	0	0	0	0.0	0.0	0.0	0	0	1.000
DMC	3810	93	0	0	0	0.0	0.0	0.0	0	0	1.000
DMC	3820	71	0	0	0	0.0	0.0	0.0	0	0	1.000
DMC	3832	56	0	0	0	0.0	0.0	0.0	0	0	1.000
DMC	3834	366	0	0	0	0.0	0.0	0.0	0	0	1.000
DMC	3835	294	0	0	0	0.0	0.0	0.0	0	0	1.000
DMC	3842	349	0	0	0	0.0	0.0	0.0	0	0	1.000
DMC	3846	148	0	0	0	0.0	0.0	0.0	0	0	1.000
DMC	3852	82	0	0	0	0.0	0.0	0.0	0	0	1.000
DMC	3854	310	0	0	0	0.0	0.0	0.0	0	0	1.000